

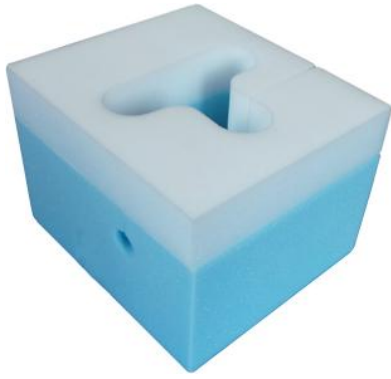
Freedom of Information Request: Our Reference CTHB_338_17

You asked:

For information in relation to prone positioning pillows.

Our response:

Please see our response in Attachment 1.



Gentle Touch® / Prone Positioning Pillow / Prone Position Foam Headrest

1. Do any of the hospitals in your trust use the foam support shown above for positioning your patient's head in the prone position? If so which hospitals?

Yes – Prince Charles and Royal Glamorgan Hospitals.

2. If a hospital in your Health Board uses the foam support shown above, which size do they use?

Please highlight 4" 5" 7"

3. If a hospital in your Health Board uses the foam support shown above, on average how long is the case time?

60 mins

4. If a hospital in your trust uses the foam support shown above, approximately how many do they use per week?

1-2

5. If a hospital in your Health Board uses the foam support shown above, what is the box quantity they arrive in?

Please highlight 5 8 10

Other 6

6. If a hospital in your Health Board uses the foam support shown above, how much do they pay per cushion?

Please highlight £9-£10 £11-£12 £13-£14 £15-£16

Other £19-£20

7. If a hospital in your Health Board uses the foam support shown above, who is the supplier?

Carefusion

8. If a hospital in your Health Board uses the foam support shown above, are they supplied vacuum packed?

No

9. Who is the Clinical Anaesthesia Head (or equivalent) in your hospital?

Vikram Sinha – Clinical Director