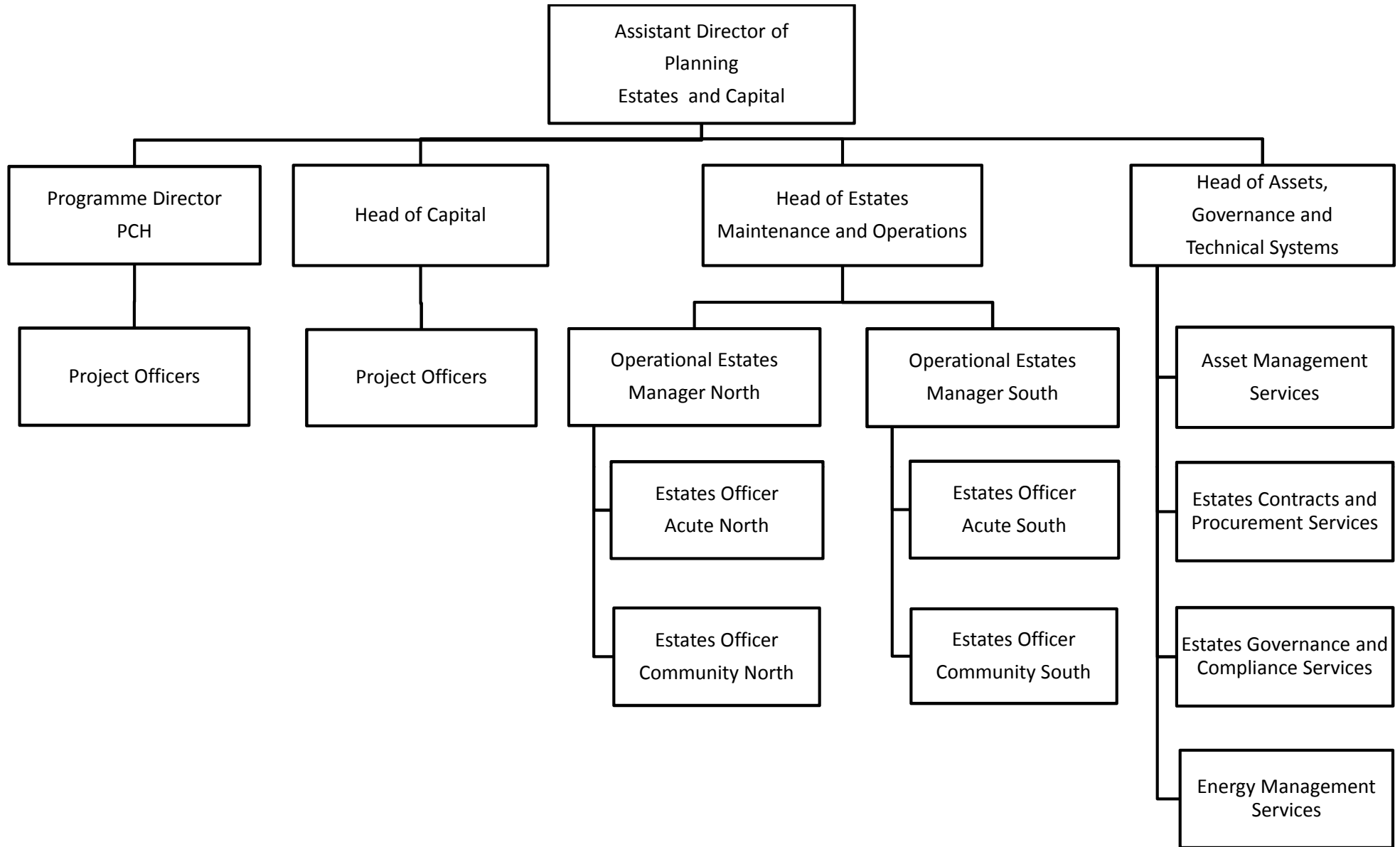


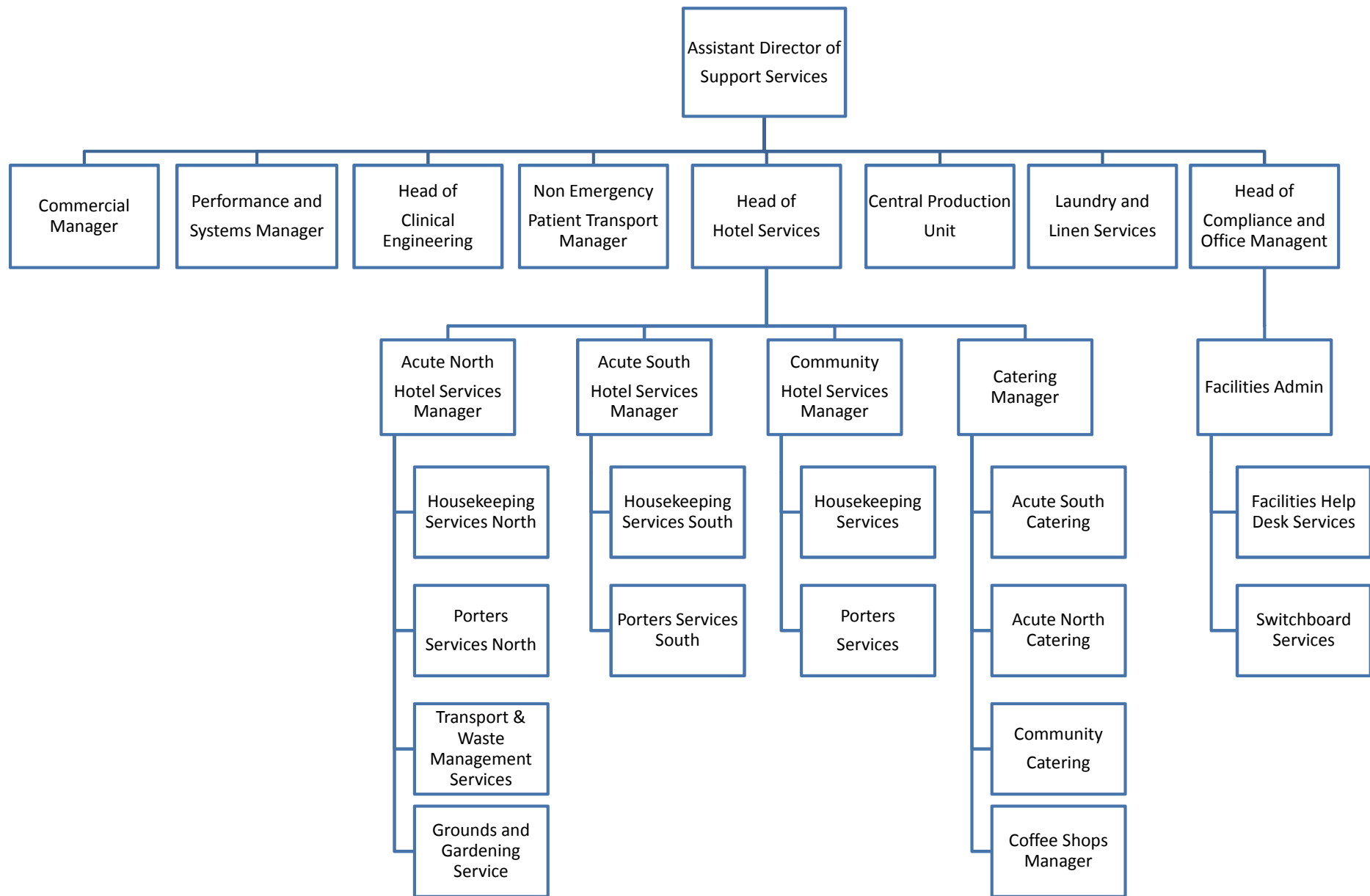
Freedom of Information Request: Our Reference CTHB_91_17

You asked:

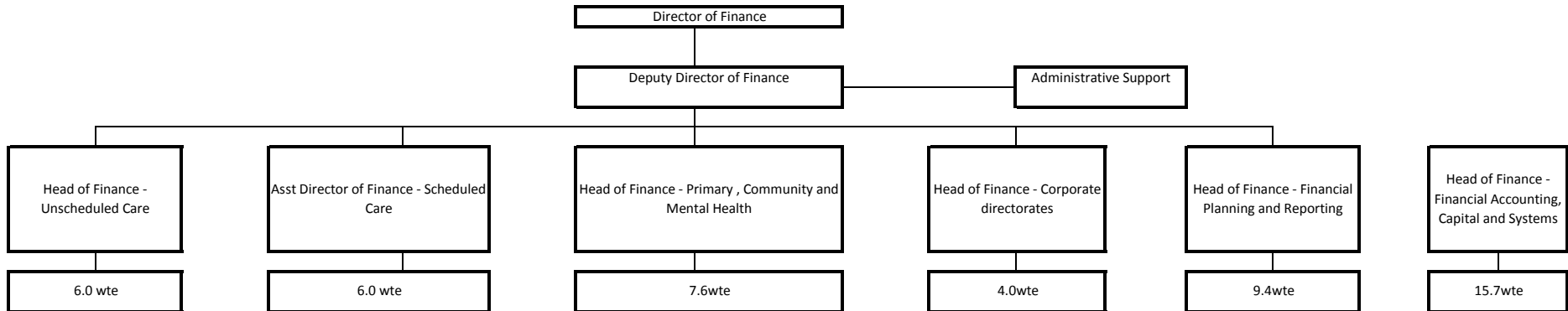
Organisation Structure for the following areas:

- **Estates** - Attachment 1
- **Facilities** – Attachment 2
- **Finance** – Attachment 3
- **Legal** – We do not have a structure for legal services.
- **Procurement** – Attachment 4
- **IT** – Attachment 5
- **Operational Management** – Attachment 6

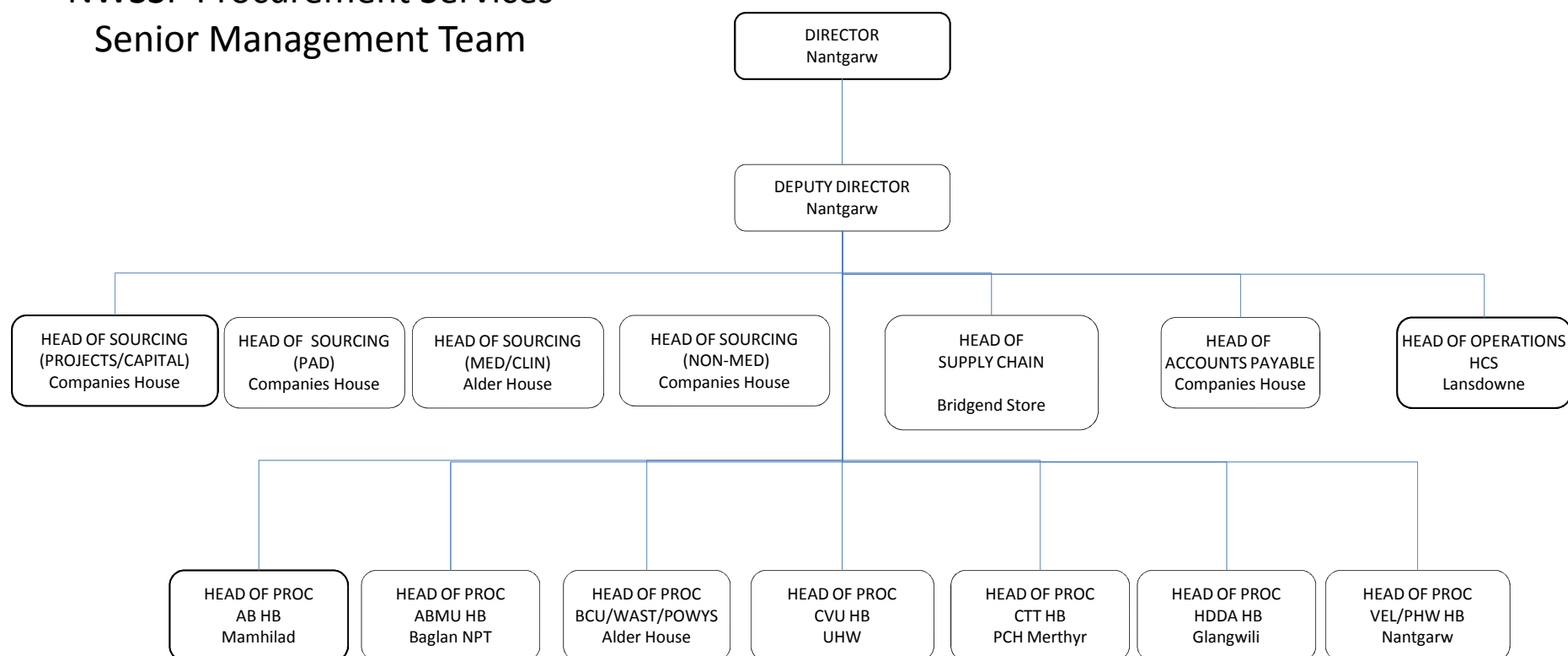




Finance Directorate Structure - March
2017



NWSSP Procurement Services Senior Management Team



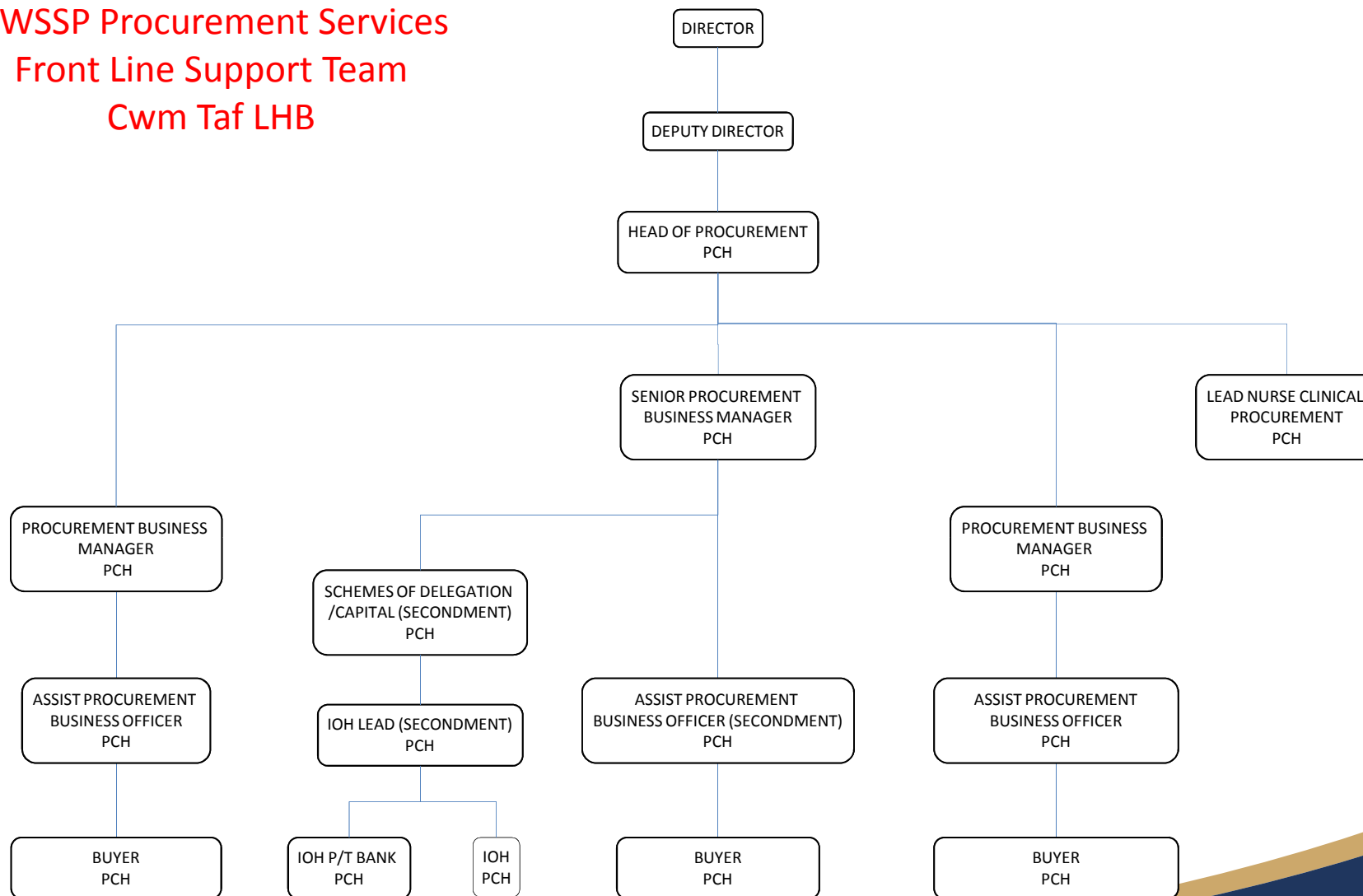
Updated December 2016



GIG
CYMRU
NHS
WALES

Partneriaeth
Cydwasaethau
Shared Services
Partnership

NWSSP Procurement Services
Front Line Support Team
Cwm Taf LHB



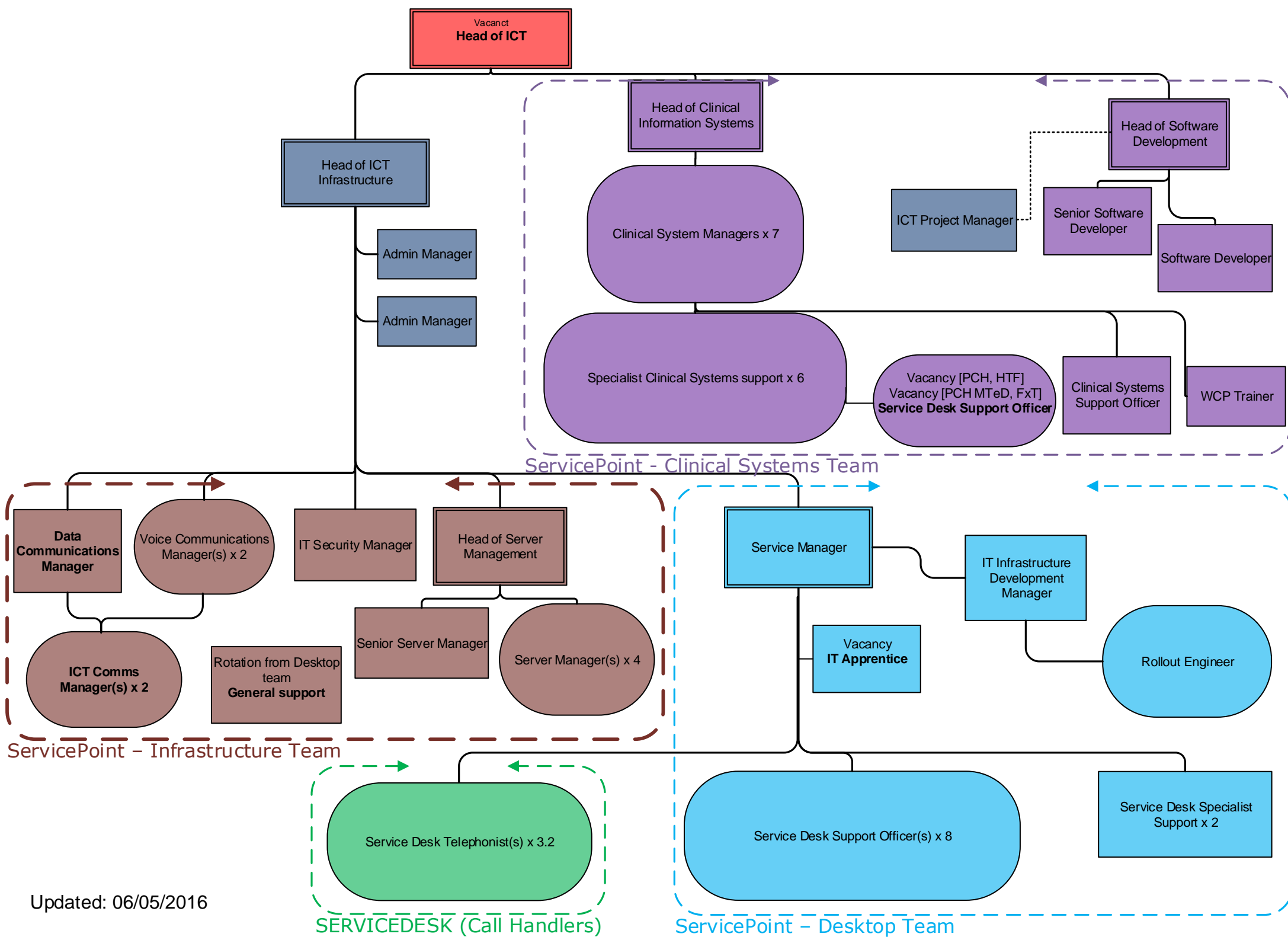
PCH = Prince Charles Hospital Merthyr
 SECONDMENT/FIXED TERM UNTIL END MARCH 2017

Updated September 2016



GIG
 CYMRU
NHS
 WALES

Partneriaeth
 Cydwasanaethau
 Shared Services
 Partnership



Independent Board Members: Community Members - Cllr Clive Jones & Mr Mel Jehu; IM & Governance – Dr Chris Turner; Local Authority – Cllr Keiron Montague; Third Sector – Mrs Maria Thomas; Trade Union – Mrs Gaynor Jones; Legal – Mr Anthony Seculer; Finance – Mr John Hill-Tout; University – Ms Jayne Dowden

Chair
Dr Chris Jones
Vice Chair
Prof Donna Mead

Associate Board Members:
Social Services – Mr Giovanni Isingrini
Stakeholder Reference Group – Ms Claire Llewellyn
Healthcare Professions Forum – Vacancy

Hosted organisations

Welsh Health Specialised
Services Committee
(WHSSC)

Emergency Ambulance
Services Committee (EASC)

Cwm Taf University Board Members

January 2017

Chief Executive
Allison Williams

John Palmer
Director of
Primary,
Community and
Mental Health

Chris White
Chief Operating
Officer and
Director of
Therapies and
Health Science

**Lynda
Williams**
Director of
Nursing,
Midwifery and
Patient Care

Kamal Asaad
Medical Director

**Kelechi
Nnoaham**
Director of
Public Health

**Ruth
Treharne**
Director of
Planning and
Performance

**Joanna
Davies**
Director of
Workforce and
Organisational
Development

**Steve
Webster**
Deputy Chief
Executive and
Director of
Finance

**Robert
Williams**
Board Secretary
Director of
Corporate Svs &
Governance

**Stephen
Harrhy**
Chief Ambulance
Services
Commissioner
Board Director

**Head of Medicines
Management**
Suzanne Scott
Thomas

**Assistant
Director
Operations**
CAMHS and
Mental Health
Paul Davies

**CAMHS
CD**
Tracy
Gardiner
General
Manager
Jo Williams
**Head of
Nursing**
Julie Cude
Psychology
Vacancy

**Mental Health
CD**
Adarsh Shetty
Head of Nursing
Phil Lewis
Psychology
Juan Delnort

Deputy COO
Kath McGrath
**Asst Director
Operations**
Craig Wilson
**Therapies and
Health Sciences**
Alyson Davies
**Business
Support and
UHB status**
Amanda Powell

**Assistant
Director of
Nursing**
Lesley Bevan
**Assistant
Director of
Quality
Improvement
and Clinical
Governance**
Andrea Gristock

**Deputy Medical
Director**
Ruth Alcolado
Assistant MDs
Richard Quirke
Prof Haray
Vijay Singh
Anthony Gibson
Assistant R&D
John Geen

**Public Health
Consultants**
Sara Thomas
Angela Jones
**Health
Promotion
Specialists**
Margaret
Munkley
Diane
Gibbons

**Ass't Directors
Innovation**
Rachel Marsh
Planning
Samia Saeed-
Edmonds
**Performance
and information**
Deb Evans
Commissioning
Julie Keegan
Capital&Estates
Tim Burns

**Assistant
Directors of
Workforce and
Organisational
Development**
OD
Christine
Davies
Workforce
Gareth
Hardacre

**Deputy Director
of Finance**
Mark Thomas
**Assistant
Directors of
Finance**
Ana Riley
Andrew Jones
Sue Holroyd

**Head of
Corporate
Services**
Gwenan Roberts
**Head of
Communication**
Felicity Waters
**Head of Risk
Management**
Chris Beadle

**Assistant
Director of
Facilities**
Anthony
Hayward
Head of IT (interim)
Karen Winder
Liam Morrissey
Chris Ball

**Localities and Primary
Care
CDs**
Gareth Jordan (C)
Stuart Hackwell (MT)
Kurt Burkhardt (TE)
David Miller (R)
Head of Primary Care
Sarah Bradley
Localities Manager
Alison Lagier
Heads of Nursing
Lesley Lewis (R&TE)
Vacancy MT&C)
Head of Therapies
Collette Kiernan

**Acute Med.
A&E
CD**
Anthony
Gibson
Associate CD
Vacancy
DM
Neil Cooper

**Gen Surgery
& Urology
CD**
Xavier
Escofet
T&O
Lisa Williams
DM
Sam Williams

**Anaesthetics
Critical care
and theatres
(inc Med.
records &
OPD)
CD**
Vikram Sinha
DM
Alan Lewis

**Head and
Neck
CD**
Vijay Singh
Associate CD
Keith Smart
DM
Lucy Timlin

**Radiology
CD**
Balan
Palaniappan
DM
Chris Kalinka

**Pathology
CD**
Esther Youd
DM
Glyn Evans

**Obs, gynae &
sexual
health
CD**
Jonathan
Pembbridge
**Head of
Midwifery**
Rachel
Fielding

**Children &
Young
People
CD**
Lynne Millar-
Jones
DM
Chris Moulds

Heads of Nursing and site based

Amanda Cassidy (Royal Glamorgan Hospital) and Chris England (Prince Charles Hospital)

CLINICAL LEADS FOR ALLIANCE WORK

Ruth Alcolado (Acute Medicine Model) Tim Havard (General Surgery) Phillip Wardle (Diagnostic Hub)
Lynne Millar-Jones (Paediatrics) Jonathan Pembbridge (Obs and Gynae)

**CD- Clinical Director
DM - Directorate Manager**