

Mortality Indicators - September 2021

Population based measures				
Ref No.	Measure	Source	Reporting Level	Link
1	Life expectancy at birth	ONS	Unitary Authority	Click Here
2	Age Standardised Mortality Rates (ASMR):registered deaths per 100,000 of resident population	ONS	Unitary Authority	Click Here
3	Avoidable Mortality: age standardised deaths per 100,000 of resident population for amenable and preventable conditions	Public Health Wales/ONS	Unitary Authority	Click Here
4	Excess Winter Mortality Index (EWMI)	ONS	Unitary Authority	Click Here
5	Perinatal Mortality: Registered deaths per 1,000 of still / live births	ONS	LHB	Click Here
Hospital Based Measures				
9	Crude In-hospital mortality rate	CHKS	Main Hospital	Click Here
10	Deaths in hospital within 30 days of emergency admission for hip fracture for patients aged 65 and over	CHKS	LHB	Click Here
11	Rate of death in hospital within 30 days of emergency admission with a heart attack (myocardial infarction) for patients aged 35 to 74	CHKS	LHB	Click Here
12	Deaths in hospital within 30 days of emergency admission for a stroke	CHKS	LHB	Click Here
14	Rates of deaths in hospital within 30 days of Elective Surgery	CHKS	LHB	Click Here
15	Rates of deaths in hospital within 30 days of Non-Elective Surgery	CHKS	LHB	Click Here
16	Accident & Emergency crude mortality rate	EDDS	DGH	Click Here
Contextual Measures				
17	% clinical coding completeness	CHKS	LHB	Click Here
20	Proportion of deaths in hospital as a % of total registered deaths	ONS	LHB	Click Here
21	Deprivation: % of LSOA's in most deprived 20%	StatsWales	Unitary Authority	Click Here

Mortality Indicator Ref No 1: Life Expectancy at Birth

Males

UA Area	2002-04	2003-05	2004-06	2005-07	2006-08	2007-09	2008-10	2009-11	2010-12	2011-13	2012-14	2013-15	2014-16	2015-17	2016-18
Isle of Anglesey	76.7	77.1	77.1	76.9	77.0	76.9	77.3	78.0	78.5	78.6	78.6	78.8	78.8	79.1	79.0
Gwynedd	76.8	76.9	76.8	77.1	77.4	77.4	77.6	78.2	78.7	79.5	79.8	79.6	79.2	79.0	79.2
Conwy	75.8	76.3	76.5	76.9	77.0	77.2	77.9	78.1	78.8	78.9	79.0	78.9	78.8	79.3	78.8
Denbighshire	76.4	76.3	76.5	77.0	77.3	77.5	77.6	78.1	78.3	78.2	77.8	78.0	77.5	77.8	78.0
Flintshire	76.1	76.3	76.6	77.3	77.5	78.0	78.2	78.8	78.9	79.0	78.8	79.0	79.2	79.3	79.3
Wrexham	75.8	76.2	76.8	77.1	77.1	77.3	77.5	78.1	78.2	78.5	78.4	78.4	78.5	78.4	78.2
Powys	77.3	77.7	78.1	78.4	79.0	79.1	79.4	79.4	79.8	80.2	80.5	80.3	79.9	79.6	79.8
Ceredigion	77.5	77.3	78.2	79.1	79.9	79.6	79.8	79.6	79.7	79.6	80.3	79.9	80.0	79.5	79.5
Pembrokeshire	75.9	75.9	76.5	76.7	77.2	77.5	78.1	78.7	79.3	79.2	79.6	79.2	79.3	78.9	79.3
Carmarthenshire	75.4	75.6	75.8	76.2	76.5	77.3	77.6	78.2	78.4	78.5	78.8	78.6	78.6	78.0	77.8
Swansea	75.7	75.7	76.3	76.3	76.9	76.7	77.1	77.0	77.5	77.5	77.9	78.0	77.8	77.3	77.3
Neath Port Talbot	74.5	75.2	76.0	76.3	76.2	76.1	76.4	76.5	76.6	76.5	77.2	77.4	77.5	77.0	76.7
Bridgend	75.5	75.6	76.0	75.8	76.0	76.3	76.8	76.8	76.9	77.1	77.2	77.2	77.5	77.9	77.7
The Vale of Glamorgan	76.0	76.9	77.7	77.7	77.7	78.0	78.7	79.3	79.5	79.7	79.5	79.2	78.9	78.9	79.3
Cardiff	75.8	76.2	76.5	76.4	76.5	76.9	77.6	78.0	78.1	78.1	78.2	78.3	78.4	78.5	78.2
Rhondda, Cynon, Taff	74.8	75.1	75.6	74.9	75.3	75.3	76.0	75.8	76.3	76.5	76.9	76.9	77.2	77.5	77.5
Merthyr Tydfil	73.9	74.4	75.4	75.5	74.9	74.8	75.6	76.3	77.4	76.8	77.1	76.6	76.9	77.2	77.4
Caerphilly	74.8	75.3	75.6	75.8	75.6	76.2	76.8	77.4	77.5	77.6	77.9	77.8	77.9	77.8	77.8
Blaenau Gwent	73.9	74.2	74.7	75.2	75.2	75.6	75.8	75.9	75.7	75.5	76.2	76.5	76.6	76.2	76.3
Torfaen	75.8	76.2	77.2	77.0	76.8	76.5	77.2	77.6	77.5	77.6	77.9	78.2	78.0	77.6	77.8
Monmouthshire	78.0	78.4	78.7	78.7	78.7	79.5	80.3	80.3	80.0	79.8	80.6	80.7	80.8	80.3	80.8
Newport	75.2	75.9	76.6	77.0	76.9	76.7	76.8	77.6	77.8	77.9	78.1	78.1	78.2	77.8	77.6
Wales	75.8	76.1	76.6	76.7	76.9	77.1	77.5	77.8	78.1	78.2	78.4	78.4	78.4	78.3	78.3

Females

UA Area	2002-04	2003-05	2004-06	2005-07	2006-08	2007-09	2008-10	2009-11	2010-12	2011-13	2012-14	2013-15	2014-16	2015-17	2016-18
Isle of Anglesey	81.3	81.4	82.2	82.2	82.7	82.1	81.9	82.2	82.9	83.0	82.9	82.6	82.6	82.9	83.2
Gwynedd	80.8	81.0	81.6	82.0	82.0	82.1	82.1	83.0	82.9	83.6	83.3	83.7	83.6	83.4	83.3
Conwy	80.9	81.2	81.5	81.4	81.5	81.7	81.8	82.2	82.5	82.8	82.7	82.6	83.0	82.8	82.8
Denbighshire	80.3	80.1	80.6	80.8	81.1	80.5	80.4	80.9	81.2	81.2	81.4	81.8	82.0	81.8	81.5
Flintshire	80.9	80.7	81.1	81.3	81.6	81.8	81.9	82.3	82.3	82.3	82.5	82.4	82.6	82.4	82.6
Wrexham	79.9	80.1	80.4	80.5	80.7	80.8	81.1	81.6	81.9	82.0	81.8	81.6	81.6	81.4	81.3
Powys	81.0	81.3	81.7	82.1	82.6	83.0	83.1	83.3	83.4	83.5	83.6	83.5	84.1	84.2	84.0
Ceredigion	81.4	81.9	82.6	83.6	83.6	83.5	83.2	83.3	83.7	83.8	83.9	83.7	84.0	84.2	84.2
Pembrokeshire	80.3	81.0	81.5	81.7	81.8	82.2	82.2	82.5	82.4	82.7	83.1	83.2	83.5	83.3	83.3
Carmarthenshire	80.2	80.7	81.1	81.3	81.2	81.2	81.6	82.1	82.5	82.5	82.5	82.3	82.2	82.2	82.3
Swansea	80.5	80.8	81.0	80.9	81.0	81.5	82.0	82.2	82.1	82.0	82.4	82.5	82.2	82.1	82.2
Neath Port Talbot	80.1	80.4	80.2	80.6	80.3	80.6	80.8	80.9	81.2	81.0	81.2	81.1	81.1	80.9	81.0
Bridgend	79.7	80.0	80.2	80.1	80.1	81.0	81.3	81.2	80.6	81.0	81.7	81.8	81.8	81.2	81.1
The Vale of Glamorgan	81.0	80.8	81.2	81.7	82.3	82.5	82.6	83.1	83.1	83.2	83.2	83.2	83.5	83.4	83.4
Cardiff	80.4	80.7	81.2	81.4	81.5	81.6	81.7	82.1	82.4	82.8	82.8	82.6	82.7	82.7	82.9
Rhondda, Cynon, Taff	79.2	79.4	79.9	79.8	79.8	79.8	80.2	80.7	80.9	80.8	80.9	80.6	80.9	81.0	81.1
Merthyr Tydfil	78.2	78.6	79.1	79.4	79.5	79.3	80.2	80.7	81.0	80.8	80.5	80.5	80.6	80.6	80.6
Caerphilly	79.4	79.3	79.8	80.2	80.7	80.9	81.2	81.6	81.4	81.5	81.4	81.2	81.3	81.2	81.3
Blaenau Gwent	78.4	78.4	78.6	78.5	78.6	78.9	79.5	79.8	79.9	80.1	80.4	80.6	80.6	80.6	80.6
Torfaen	80.5	80.9	81.1	80.8	80.7	80.7	81.4	82.2	82.1	81.7	81.6	82.0	82.4	82.2	82.0
Monmouthshire	81.2	82.5	83.1	83.5	83.2	83.2	83.6	83.6	83.7	84.0	83.9	84.1	83.9	84.0	84.2
Newport	80.6	80.3	80.4	80.4	80.9	81.3	81.8	82.0	82.0	82.2	82.4	82.3	81.9	81.8	81.9
Wales	80.3	80.5	80.9	81.1	81.2	81.4	81.6	82.0	82.1	82.2	82.3	82.3	82.3	82.2	82.3

Source: Office for National Statistics

<https://www.ons.gov.uk/peoplepopulationandcommunity/healthandsocialcare/healthandlifeexpectancies/datasets/lifeexpectancyatbirthandage65bylocalareasuk>

Next Update: to be announced

Figures are based on the number of deaths registered and mid-year population estimates, aggregated over 3 consecutive years

Mortality Indicator Ref No 2: Age Standardised Mortality Rates (ASMR)

Table 1a: Deaths (numbers and rates) by area of usual residence (administrative areas), 2020 registrations

UA Area	Number of Deaths			Age-standardised mortality rate ¹		
	Persons	Males	Females	Persons	Males	Females
WALES	37,399.0	18,830.0	18,569.0	1114.6	1297.3	963.5
Isle of Anglesey	877.0	435.0	442.0	952.3	1130.8	828.3
Gwynedd	1,428.0	723.0	705.0	963.2	1130.8	811.9
Conwy	1,587.0	832.0	755.0	918.2	1137.0	736.0
Denbighshire	1,338.0	680.0	658.0	1238.0	1343.2	1127.8
Flintshire	1,765.0	882.0	883.0	1103.4	1239.9	984.2
Wrexham	1,590.0	811.0	779.0	1147.9	1268.0	1031.8
Powys	1,725.0	869.0	856.0	947.7	1119.9	816.8
Ceredigion	877.0	451.0	426.0	942.6	1117.2	787.8
Pembrokeshire	1,559.0	785.0	774.0	939.1	1072.3	825.6
Carmarthenshire	2,404.0	1,239.0	1,165.0	1061.7	1254.0	909.1
Swansea	3,009.0	1,492.0	1,517.0	1197.9	1433.7	1021.5
Neath Port Talbot	1,902.0	952.0	950.0	1286.9	1538.8	1098.8
Bridgend	1,878.0	946.0	932.0	1277.6	1458.9	1120.4
Vale of Glamorgan	1,419.0	713.0	706.0	994.9	1218.3	836.5
Cardiff	3,142.0	1,582.0	1,560.0	1102.2	1350.7	916.3
Rhondda, Cynon, Taff	3,104.0	1,543.0	1,561.0	1362.5	1539.5	1203.4
Merthyr Tydfil	773.0	398.0	375.0	1386.2	1603.5	1208.2
Caerphilly	2,122.0	1,066.0	1,056.0	1234.7	1425.2	1086.0
Blaenau Gwent	978.0	476.0	502.0	1407.6	1520.2	1292.1
Torfaen	1,165.0	569.0	596.0	1175.4	1334.0	1044.6
Monmouthshire	1,058.0	539.0	519.0	849.9	1008.7	722.4
Newport	1,699.0	847.0	852.0	1240.8	1426.1	1084.6

¹ The age-standardised mortality rates are standardised to the 2013 European Standard Population, expressed per 100,000 population. Age-standardised rates are used to allow comparison between populations which may contain different proportions of people of different ages.

Source: Office for National Statistics

[Deaths registered in England and Wales - Office for National Statistics \(ons.gov.uk\)](https://ons.gov.uk)

Next Update: to be announced

Mortality Indicator Ref No 3: Avoidable, Amenable and Preventable Mortality

Causes of death considered avoidable, amenable & preventable, European age-standardised rate (EASR) per 100,000, persons, Wales, 2017-2019

Area of usual residence	Avoidable		Amenable		Preventable	
	Deaths (annual average)	EASR	Deaths (annual average)	EASR	Deaths (annual average)	EASR
WALES	7,790.3	263.0	2,876.8	96.7	4,913.5	166.3
Isle of Anglesey	192.7	256.0	68.7	90.7	124.0	165.3
Gwynedd	293.3	244.8	112.0	93.2	181.3	151.6
Conwy	335.3	265.2	126.2	98.5	209.2	166.7
Denbighshire	270.0	270.8	105.0	104.1	165.0	166.7
Flintshire	352.7	232.5	124.7	81.6	228.0	150.9
Wrexham	347.0	273.8	129.5	101.7	217.5	172.1
Powys	317.0	214.5	119.3	78.3	197.7	136.2
Ceredigion	174.0	235.0	64.3	85.7	109.7	149.3
Pembrokeshire	320.3	241.2	122.0	89.5	198.3	151.7
Carmarthenshire	495.3	257.4	181.0	92.5	314.3	164.9
Swansea	595.7	275.7	203.3	93.7	392.3	182.0
Neath Port Talbot	430.3	311.3	152.0	109.4	278.3	201.9
Bridgend	390.3	285.0	143.2	103.8	247.2	181.2
The Vale of Glamorgan	281.3	220.5	107.0	83.9	174.3	136.7
Cardiff	681.7	262.9	249.7	97.0	432.0	165.9
Rhondda, Cynon, Taff	659.3	301.4	233.7	106.5	425.7	195.0
Merthyr Tydfil	178.7	329.6	65.5	120.7	113.2	208.9
Caerphilly	479.0	285.1	183.3	109.0	295.7	176.0
Blaenau Gwent	208.3	315.7	78.2	117.7	130.2	198.0
Torfaen	243.0	277.4	92.3	105.3	150.7	172.1
Monmouthshire	181.7	179.8	70.8	69.4	110.8	110.5
Newport	363.3	284.4	145.2	113.2	218.2	171.1

Avoidable, amenable & preventable mortality are classified according to ONS definitions;

avoidable mortality – deaths that are amenable, preventable or both, where each death is counted only once

treatable mortality - deaths that can be mainly avoided through timely and effective healthcare interventions, including secondary prevention and treatment

preventable mortality - deaths that can mainly be avoided through effective public health and primary prevention interventions

Deaths (annual averages) based on 2017-19 deaths divided by 3

Source: Office for National Statistics

<https://www.ons.gov.uk/peoplepopulationandcommunity/healthandsocialcare/causesofdeath/datasets/avoidablemortalitybylocalauthorityinenglandandwales>

Next Update: to be announced

Mortality Indicator Ref No 4: Excess Winter Mortality Index (EWMI)											
Area Name	2008-09	2009-10	2010-11	2011-12	2012-13	2013-14	2014-15	2015-16	2016-17	2017-18	2018-19
Wales	25.1	17.3	20.4	12.7	18.0	10.2	24.9	17.4	17.6	32.3	13.3
Isle of Anglesey	30.5	28.2	35.5	:	14.1	16.7	28.2	9.0	:	46.1	14.0
Gwynedd	25.4	14.6	11.3	23.1	24.0	6.2	35.1	17.5	6.5	41.8	10.6
Conwy	27.3	23.6	15.1	5.3	15.6	3.5	20.0	28.3	19.8	42.3	:
Denbighshire	19.2	18.8	20.0	15.9	13.2	21.8	18.2	21.7	15.2	58.3	13.7
Flintshire	32.9	25.7	21.3	15.2	27.5	14.8	24.4	15.4	17.9	26.1	10.6
Wrexham	23.4	16.5	32.6	11.9	27.3	18.3	27.8	11.7	12.2	29.3	20.8
Powys	33.9	13.7	11.8	14.7	19.4	9.2	19.9	6.4	33.9	29.8	16.8
Ceredigion	39.7	13.8	19.5	:	19.4	6.9	13.8	20.9	17.7	19.0	20.6
Pembrokeshire	28.6	19.4	20.5	6.1	25.7	3.7	32.1	15.4	31.0	20.8	10.6
Carmarthenshire	22.5	16.2	20.6	4.3	14.2	9.2	24.7	15.9	15.3	40.3	8.7
Swansea	24.1	21.3	13.7	12.5	14.7	12.6	27.8	18.8	21.1	25.8	11.3
Neath Port Talbot	27.1	22.8	32.7	7.5	18.5	1.6	20.6	24.4	9.7	34.5	6.5
Bridgend	21.5	19.4	36.6	24.4	11.5	14.8	34.0	15.8	14.2	15.3	21.4
The Vale of Glamorgan	30.8	14.0	7.3	16.3	17.4	3.0	31.1	23.5	17.0	19.2	25.4
Cardiff	22.0	16.0	25.0	18.9	14.9	8.6	18.5	19.0	21.4	32.9	12.8
Rhondda Cynon Taf	26.3	11.5	12.3	10.0	17.5	4.5	20.8	16.0	11.9	35.8	19.4
Merthyr Tydfil	2.4	:	14.8	19.8	33.2	2.7	24.2	15.9	22.2	30.2	9.1
Caerphilly	22.8	23.2	29.2	12.3	15.9	20.8	27.6	24.6	26.7	28.7	10.7
Blaenau Gwent	16.4	17.0	21.5	12.1	11.2	25.5	11.7	11.2	10.2	36.8	10.2
Torfaen	30.6	18.7	21.7	16.3	19.1	:	39.8	14.9	25.7	37.3	19.7
Monmouthshire	20.5	20.0	18.6	9.2	33.4	16.0	24.1	8.5	11.6	36.2	24.0
Newport	23.0	2.1	15.0	30.7	9.4	12.1	27.3	18.5	18.5	35.6	6.5

Source: Office for National Statistics

The EWM index cannot be calculated where the number of EWD's is equal to zero or where there are a negative number of excess winter deaths.

Provisional 2019/20 Unitary Authority data not available from ONS

<https://www.ons.gov.uk/peoplepopulationandcommunity/birthsdeathsandmarriages/deaths/datasets/excesswintermortalityinenglandandwalesreferencetables>

Next Update: November 2021

Method for calculating excess winter mortality

Excess deaths

The ONS standard method defines the winter period as December to March, and compares the number of deaths that occurred in this winter period with the average number of deaths occurring in the preceding August to November and the following April to July:

$EWM = \text{winter deaths} - \text{average non-winter deaths}$

This produces the number of excess winter deaths, which is then rounded to the nearest 10 for final data and to the nearest 100 for provisional data.

Excess winter mortality index

The EWM index is calculated so that comparisons can be made between sexes, age groups and regions and is calculated as the number of excess winter deaths divided by the average non-winter deaths:

$EWM \text{ Index} = (EWM / \text{average non-winter deaths}) \times 100$

Mortality Indicator Ref No 5: Perinatal mortality deaths per 1,000 of still/live births

Live births, stillbirths and infant mortality statistics, 2019

Area of usual residence	Numbers						Mortality Rates ¹			
	Births		Deaths				Perinatal	Neonatal	Post-natal	Infant
	Live births	Stillbirths	Perinatal	Neonatal	Post-natal	Infant				
WALES	29,704	138	213	98	22	120	7.1	3.3	0.7	4
Aneurin Bevan	6,121	25	38	17	7	24	6.2	2.8 <i>u</i>	1.1 <i>u</i>	3.9
Betsi Cadwaladr	6,355	36	50	18	4	22	7.8	2.8 <i>u</i>	0.6 <i>u</i>	3.5
Cardiff and Vale	4,939	22	36	16	1	17	7.3	3.2 <i>u</i>	:	3.4 <i>u</i>
Cwm Taf Morgannwg	4,499	20	34	18	2	20	7.5	4.0 <i>u</i>	:	4.4 <i>u</i>
Hywel Dda	3,229	15	22	8	6	14	6.8	2.5 <i>u</i>	1.9 <i>u</i>	4.3 <i>u</i>
Powys Teaching	1,034	4	6	3	0	3	5.8 <i>u</i>	2.9 <i>u</i>	:	2.9 <i>u</i>
Swansea Bay	3,527	16	27	18	2	20	7.6	5.1 <i>u</i>	:	5.7 <i>u</i>

Note: Rates were not calculated where there were fewer than 3 deaths in a cell, denoted by (*u*). It is ONS practice not to calculate rates where there are fewer than 3 deaths in a cell, as rates based on such low numbers are susceptible to inaccurate interpretation. Rates which are based on between 3 and 19 deaths are displayed in tables but are denoted by (*u*) as a warning to the user that their reliability as a measure may be affected by the small number of events and ':' denotes data not available

¹ Perinatal deaths per 1,000 live births and stillbirths. Neonatal, postneonatal and infant deaths per 1,000 live births.

Source: Office for National Statistics

<https://www.ons.gov.uk/peoplepopulationandcommunity/birthsdeathsandmarriages/deaths/datasets/deathsregisteredinenglandandwalesseriesdrreferencetables>

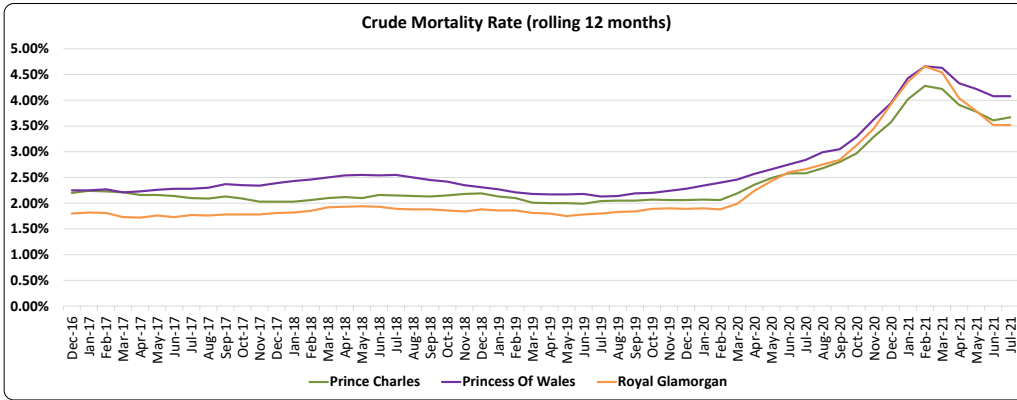
Next Update: to be announced

Due to the coronavirus (COVID-19) pandemic, birth registrations and subsequent mortality outcomes for 2020 in England and Wales have been delayed.

Mortality Indicator Ref No 9 : Crude In-hospital Mortality Rate

Rolling Annual Period	Prince Charles %	Princess Of Wales %	Royal Glamorgan %
Dec-16	2.20%	2.25%	1.80%
Jan-17	2.24%	2.25%	1.82%
Feb-17	2.23%	2.27%	1.81%
Mar-17	2.21%	2.21%	1.73%
Apr-17	2.16%	2.23%	1.72%
May-17	2.16%	2.26%	1.76%
Jun-17	2.14%	2.28%	1.73%
Jul-17	2.10%	2.28%	1.77%
Aug-17	2.09%	2.30%	1.76%
Sep-17	2.13%	2.37%	1.78%
Oct-17	2.09%	2.35%	1.78%
Nov-17	2.03%	2.34%	1.78%
Dec-17	2.03%	2.39%	1.81%
Jan-18	2.03%	2.43%	1.82%
Feb-18	2.06%	2.46%	1.85%
Mar-18	2.10%	2.50%	1.92%
Apr-18	2.12%	2.54%	1.93%
May-18	2.10%	2.55%	1.94%
Jun-18	2.16%	2.54%	1.93%
Jul-18	2.15%	2.55%	1.89%
Aug-18	2.14%	2.50%	1.88%
Sep-18	2.13%	2.45%	1.88%
Oct-18	2.15%	2.42%	1.86%
Nov-18	2.18%	2.35%	1.84%
Dec-18	2.19%	2.31%	1.88%
Jan-19	2.13%	2.27%	1.86%
Feb-19	2.10%	2.21%	1.86%
Mar-19	2.01%	2.18%	1.81%
Apr-19	2.00%	2.17%	1.80%
May-19	2.00%	2.17%	1.75%
Jun-19	1.99%	2.18%	1.78%
Jul-19	2.04%	2.13%	1.80%
Aug-19	2.05%	2.14%	1.83%
Sep-19	2.05%	2.19%	1.84%
Oct-19	2.07%	2.20%	1.89%
Nov-19	2.06%	2.24%	1.90%
Dec-19	2.06%	2.28%	1.89%
Jan-20	2.07%	2.34%	1.90%
Feb-20	2.06%	2.40%	1.88%
Mar-20	2.19%	2.46%	1.99%
Apr-20	2.36%	2.57%	2.24%
May-20	2.49%	2.66%	2.43%
Jun-20	2.58%	2.75%	2.60%
Jul-20	2.58%	2.84%	2.66%
Aug-20	2.68%	2.99%	2.75%
Sep-20	2.80%	3.05%	2.84%
Oct-20	2.97%	3.29%	3.13%
Nov-20	3.29%	3.63%	3.45%
Dec-20	3.57%	3.94%	3.92%
Jan-21	4.02%	4.43%	4.36%
Feb-21	4.28%	4.66%	4.66%
Mar-21	4.22%	4.63%	4.54%
Apr-21	3.91%	4.33%	4.04%
May-21	3.78%	4.22%	3.79%
Jun-21	3.61%	4.08%	3.52%
Jul-21	3.67%	4.08%	3.52%

Source: CHKS (Cwm Taf Morgannwg)
Run Date: 8th Sep 2021

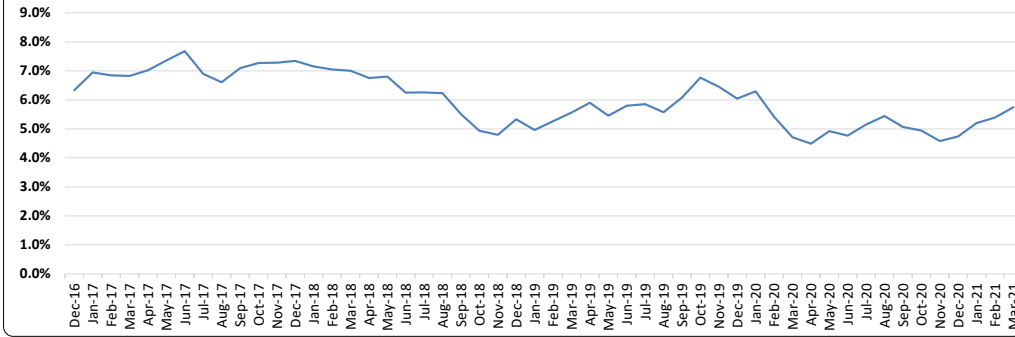


Mortality Indicator Ref No 10 : Rate of deaths in hospital within 30 days of emergency admission with a hip fracture (NoF) aged >64

Rolling 12 Month Period	Cwm Taf Morgannwg
Dec-16	6.3%
Jan-17	6.9%
Feb-17	6.8%
Mar-17	6.8%
Apr-17	7.0%
May-17	7.4%
Jun-17	7.7%
Jul-17	6.9%
Aug-17	6.6%
Sep-17	7.1%
Oct-17	7.3%
Nov-17	7.3%
Dec-17	7.3%
Jan-18	7.2%
Feb-18	7.1%
Mar-18	7.0%
Apr-18	6.8%
May-18	6.8%
Jun-18	6.3%
Jul-18	6.3%
Aug-18	6.2%
Sep-18	5.5%
Oct-18	4.9%
Nov-18	4.8%
Dec-18	5.3%
Jan-19	5.0%
Feb-19	5.3%
Mar-19	5.6%
Apr-19	5.9%
May-19	5.5%
Jun-19	5.8%
Jul-19	5.9%
Aug-19	5.6%
Sep-19	6.1%
Oct-19	6.8%
Nov-19	6.5%
Dec-19	6.0%
Jan-20	6.3%
Feb-20	5.4%
Mar-20	4.7%
Apr-20	4.5%
May-20	4.9%
Jun-20	4.8%
Jul-20	5.1%
Aug-20	5.4%
Sep-20	5.1%
Oct-20	4.9%
Nov-20	4.6%
Dec-20	4.7%
Jan-21	5.2%
Feb-21	5.4%
Mar-21	5.7%

Source: CHKS
Run Date: 6th Sep 2021

CTM Mortality Rate within 30 days of emergency admission #NoF (rolling 12 months)

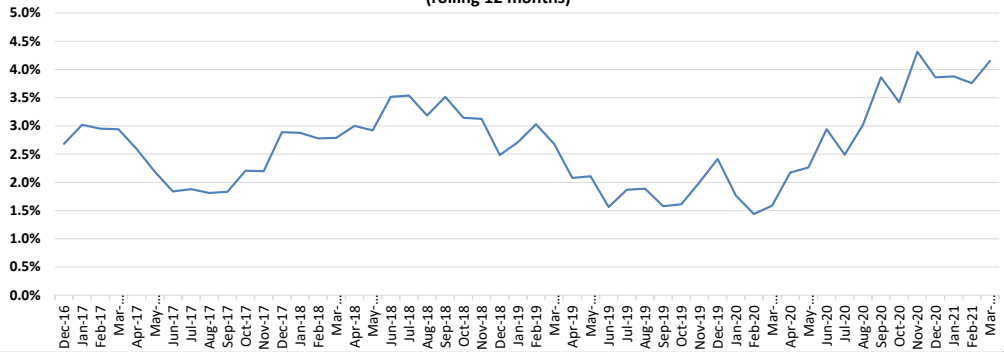


Mortality Indicator Ref No 11 : Rate of deaths in hospital within 30 days of emergency admission with a heart attack (MI) aged 35 to 74

Rolling 12 Month Period	Cwm Taf Morgannwg
Dec-16	2.7%
Jan-17	3.0%
Feb-17	3.0%
Mar-17	2.9%
Apr-17	2.6%
May-17	2.2%
Jun-17	1.8%
Jul-17	1.9%
Aug-17	1.8%
Sep-17	1.8%
Oct-17	2.2%
Nov-17	2.2%
Dec-17	2.9%
Jan-18	2.9%
Feb-18	2.8%
Mar-18	2.8%
Apr-18	3.0%
May-18	2.9%
Jun-18	3.5%
Jul-18	3.5%
Aug-18	3.2%
Sep-18	3.5%
Oct-18	3.1%
Nov-18	3.1%
Dec-18	2.5%
Jan-19	2.7%
Feb-19	3.0%
Mar-19	2.7%
Apr-19	2.1%
May-19	2.1%
Jun-19	1.6%
Jul-19	1.9%
Aug-19	1.9%
Sep-19	1.6%
Oct-19	1.6%
Nov-19	2.0%
Dec-19	2.4%
Jan-20	1.8%
Feb-20	1.4%
Mar-20	1.6%
Apr-20	2.2%
May-20	2.3%
Jun-20	2.9%
Jul-20	2.5%
Aug-20	3.0%
Sep-20	3.9%
Oct-20	3.4%
Nov-20	4.3%
Dec-20	3.9%
Jan-21	3.9%
Feb-21	3.8%
Mar-21	4.2%

Source: CHKS
Run Date: 6th Sep 2021

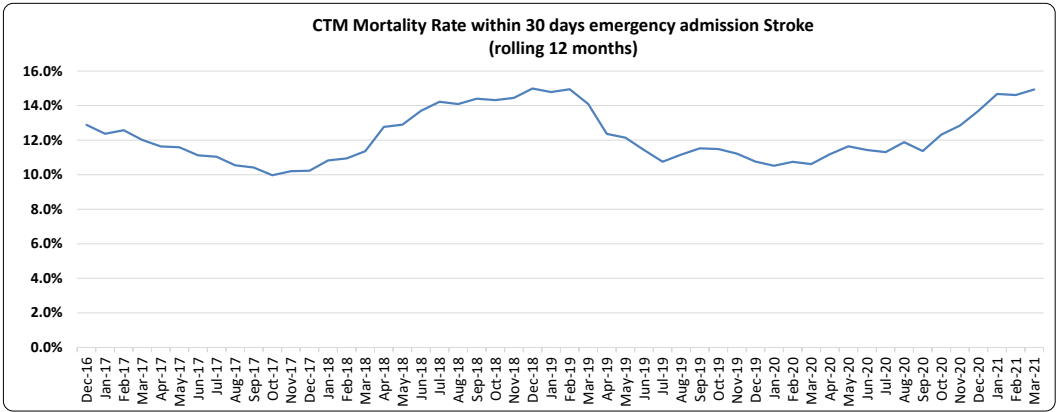
CTM Mortality Rate within 30 days emergency admission M.I. (rolling 12 months)



**Mortality Indicator Ref No 12
: Rate of deaths in hospital
within 30 days of
emergency admission for a
stroke**

Rolling 12 Month Period	Cwm Taf Morgannwg
Dec-16	12.9%
Jan-17	12.4%
Feb-17	12.6%
Mar-17	12.0%
Apr-17	11.6%
May-17	11.6%
Jun-17	11.1%
Jul-17	11.0%
Aug-17	10.5%
Sep-17	10.4%
Oct-17	10.0%
Nov-17	10.2%
Dec-17	10.2%
Jan-18	10.8%
Feb-18	10.9%
Mar-18	11.4%
Apr-18	12.8%
May-18	12.9%
Jun-18	13.7%
Jul-18	14.2%
Aug-18	14.1%
Sep-18	14.4%
Oct-18	14.3%
Nov-18	14.5%
Dec-18	15.0%
Jan-19	14.8%
Feb-19	15.0%
Mar-19	14.1%
Apr-19	12.4%
May-19	12.1%
Jun-19	11.4%
Jul-19	10.7%
Aug-19	11.2%
Sep-19	11.5%
Oct-19	11.5%
Nov-19	11.2%
Dec-19	10.8%
Jan-20	10.5%
Feb-20	10.7%
Mar-20	10.6%
Apr-20	11.2%
May-20	11.6%
Jun-20	11.4%
Jul-20	11.3%
Aug-20	11.9%
Sep-20	11.4%
Oct-20	12.3%
Nov-20	12.8%
Dec-20	13.7%
Jan-21	14.7%
Feb-21	14.6%
Mar-21	14.9%

Source: CHKS
Run Date: 6th Sept 2021



**Mortality Indicator Ref No 14
: Rate of deaths in hospital
within 30 days of elective
surgery**

Rolling 12 Month Period	Cwm Taf Morgannwg
Dec-16	0.11%
Jan-17	0.11%
Feb-17	0.12%
Mar-17	0.12%
Apr-17	0.11%
May-17	0.11%
Jun-17	0.10%
Jul-17	0.10%
Aug-17	0.11%
Sep-17	0.12%
Oct-17	0.09%
Nov-17	0.06%
Dec-17	0.05%
Jan-18	0.06%
Feb-18	0.05%
Mar-18	0.05%
Apr-18	0.05%
May-18	0.05%
Jun-18	0.06%
Jul-18	0.05%
Aug-18	0.04%
Sep-18	0.03%
Oct-18	0.03%
Nov-18	0.03%
Dec-18	0.03%
Jan-19	0.01%
Feb-19	0.01%
Mar-19	0.01%
Apr-19	0.01%
May-19	0.01%
Jun-19	0.00%
Jul-19	0.03%
Aug-19	0.03%
Sep-19	0.03%
Oct-19	0.03%
Nov-19	0.03%
Dec-19	0.03%
Jan-20	0.03%
Feb-20	0.04%
Mar-20	0.05%
Apr-20	0.05%
May-20	0.08%
Jun-20	0.09%
Jul-20	0.05%
Aug-20	0.05%
Sep-20	0.06%
Oct-20	0.07%
Nov-20	0.08%
Dec-20	0.09%
Jan-21	0.11%
Feb-21	0.07%
Mar-21	0.07%
Source: CHKS	
Run Date: 6th Sept 2021	

**Mortality Indicator Ref No
15 : Rate of deaths in
hospital within 30 days of
non-elective surgery**

Rolling 12 Month Period	Cwm Taf Morgannwg
Dec-16	1.57%
Jan-17	1.44%
Feb-17	1.47%
Mar-17	1.40%
Apr-17	1.37%
May-17	1.40%
Jun-17	1.37%
Jul-17	1.28%
Aug-17	1.22%
Sep-17	1.25%
Oct-17	1.28%
Nov-17	1.30%
Dec-17	1.35%
Jan-18	1.39%
Feb-18	1.39%
Mar-18	1.36%
Apr-18	1.35%
May-18	1.34%
Jun-18	1.34%
Jul-18	1.33%
Aug-18	1.33%
Sep-18	1.27%
Oct-18	1.21%
Nov-18	1.14%
Dec-18	1.13%
Jan-19	1.16%
Feb-19	1.15%
Mar-19	1.21%
Apr-19	1.24%
May-19	1.28%
Jun-19	1.28%
Jul-19	1.33%
Aug-19	1.35%
Sep-19	1.32%
Oct-19	1.39%
Nov-19	1.40%
Dec-19	1.38%
Jan-20	1.36%
Feb-20	1.30%
Mar-20	1.21%
Apr-20	1.18%
May-20	1.17%
Jun-20	1.19%
Jul-20	1.15%
Aug-20	1.14%
Sep-20	1.20%
Oct-20	1.16%
Nov-20	1.20%
Dec-20	1.30%
Jan-21	1.30%
Feb-21	1.37%
Mar-21	1.47%

Source: CHKS

Run Date: 6th Sept 2021

Accident & Emergency (Major Units) Crude Mortality Rates			
Deaths per 10,000 Attendances			
Rolling Annual Period	Prince Charles	Princess Of Wales	Royal Glamorgan
Apr-2012	32.1	14.1	13.1
May-2012	30.7	14.8	13.5
Jun-2012	30.0	16.0	13.5
Jul-2012	28.9	15.6	13.9
Aug-2012	27.8	15.0	14.1
Sep-2012	28.0	14.8	14.3
Oct-2012	26.2	16.2	15.4
Nov-2012	25.2	17.4	16.2
Dec-2012	23.1	17.8	16.5
Jan-2013	22.0	18.6	17.1
Feb-2013	21.0	17.6	17.2
Mar-2013	20.7	18.4	18.7
Apr-2013	21.5	18.4	18.3
May-2013	21.4	18.8	17.6
Jun-2013	20.7	19.2	17.4
Jul-2013	22.0	19.7	16.7
Aug-2013	21.3	20.3	17.5
Sep-2013	21.8	20.1	18.0
Oct-2013	21.5	19.5	17.7
Nov-2013	21.9	19.1	17.1
Dec-2013	21.6	18.8	18.1
Jan-2014	20.7	18.3	18.6
Feb-2014	20.3	19.2	18.8
Mar-2014	18.6	19.1	17.0
Apr-2014	17.2	19.1	16.9
May-2014	17.2	18.4	16.9
Jun-2014	17.7	18.2	17.3
Jul-2014	17.9	19.1	17.8
Aug-2014	20.0	19.6	16.7
Sep-2014	20.0	20.3	15.4
Oct-2014	20.9	20.6	15.7
Nov-2014	20.1	19.7	15.4
Dec-2014	21.3	20.0	15.5
Jan-2015	22.0	22.7	15.4
Feb-2015	22.1	23.4	15.0
Mar-2015	23.4	23.3	15.7
Apr-2015	24.3	23.4	16.1
May-2015	26.1	23.9	17.0
Jun-2015	26.3	24.0	16.5
Jul-2015	25.0	23.6	16.6
Aug-2015	22.9	23.1	17.0
Sep-2015	21.8	21.7	17.9
Oct-2015	22.2	22.0	16.7
Nov-2015	23.3	22.4	16.5
Dec-2015	21.5	23.0	15.0
Jan-2016	21.0	19.5	15.1
Feb-2016	20.8	18.1	15.4
Mar-2016	19.4	17.8	15.2
Apr-2016	18.9	17.3	15.2
May-2016	17.9	16.8	14.7
Jun-2016	17.4	16.3	14.6
Jul-2016	17.2	16.4	14.6
Aug-2016	17.8	15.4	14.3
Sep-2016	18.8	16.2	13.7
Oct-2016	18.2	15.2	14.7
Nov-2016	18.5	15.9	15.1
Dec-2016	18.8	15.8	14.4
Jan-2017	19.1	17.2	14.7
Feb-2017	19.1	17.6	13.8
Mar-2017	19.4	18.3	13.6
Apr-2017	19.9	18.0	13.7
May-2017	20.1	17.6	13.8
Jun-2017	20.6	17.0	14.1
Jul-2017	22.0	17.1	13.5
Aug-2017	21.6	17.2	14.1
Sep-2017	21.9	17.9	14.2
Oct-2017	22.1	18.2	13.8
Nov-2017	20.7	16.9	14.2
Dec-2017	21.5	15.3	14.9
Jan-2018	22.1	14.6	15.3
Feb-2018	23.0	14.1	17.1
Mar-2018	23.4	13.6	17.5
Apr-2018	23.9	14.2	17.0
May-2018	23.4	13.9	17.0
Jun-2018	22.4	13.7	17.0
Jul-2018	21.2	12.9	16.6
Aug-2018	21.1	13.8	15.9
Sep-2018	20.2	12.9	16.0
Oct-2018	19.2	13.5	16.6
Nov-2018	19.6	15.1	16.3
Dec-2018	19.0	15.9	15.8
Jan-2019	17.9	15.6	14.8
Feb-2019	17.9	16.2	14.0
Mar-2019	17.1	16.1	13.9
Apr-2019	16.1	15.8	13.5
May-2019	15.1	16.7	13.2
Jun-2019	15.5	17.2	13.2
Jul-2019	16.0	16.8	12.4
Aug-2019	17.2	16.0	12.9
Sep-2019	17.8	15.9	13.0
Oct-2019	18.0	16.7	12.7
Nov-2019	17.5	15.6	12.5
Dec-2019	17.5	15.5	13.0
Jan-2020	17.7	15.6	13.5
Feb-2020	16.2	14.9	12.0
Mar-2020	17.3	15.5	12.4
Apr-2020	17.8	15.8	13.2
May-2020	18.5	16.4	13.5
Jun-2020	18.5	16.8	13.1
Jul-2020	17.7	17.3	13.8
Aug-2020	17.0	17.5	13.0
Sep-2020	16.7	17.4	12.5
Oct-2020	18.3	17.6	13.4
Nov-2020	19.5	19.3	14.1
Dec-2020	20.2	21.2	14.8
Jan-2021	21.7	23.2	15.2
Feb-2021	22.4	23.2	16.5
Mar-2021	21.9	21.4	14.7
Apr-2021	20.5	21.0	14.0
May-2021	20.1	19.7	13.5
Jun-2021	20.0	18.1	13.7
Jul-2021	21.0	18.4	13.6

Source: EDDS Data Mart
Run Date: 12th Aug 2021

**Mortality Indicator Ref No 17 : % Clinical
Coding Completeness**

Rolling Annual Period	Cwm Taf Morgannwg
	%
Dec-2016	99.3%
Jan-2017	98.6%
Feb-2017	98.7%
Mar-2017	98.8%
Apr-2017	98.6%
May-2017	97.7%
Jun-2017	97.6%
Jul-2017	99.5%
Aug-2017	99.4%
Sep-2017	98.8%
Oct-2017	99.2%
Nov-2017	98.8%
Dec-2017	98.4%
Jan-2018	98.4%
Feb-2018	97.8%
Mar-2018	97.4%
Apr-2018	99.0%
May-2018	99.0%
Jun-2018	98.8%
Jul-2018	98.7%
Aug-2018	98.8%
Sep-2018	99.0%
Oct-2018	99.0%
Nov-2018	99.1%
Dec-2018	99.0%
Jan-2019	98.9%
Feb-2019	98.8%
Mar-2019	98.6%
Apr-2019	96.6%
May-2019	94.7%
Jun-2019	82.8%
Jul-2019	89.3%
Aug-2019	97.6%
Sep-2019	95.4%
Oct-2019	90.0%
Nov-2019	84.4%
Dec-2019	84.1%
Jan-2020	88.1%
Feb-2020	89.0%
Mar-2020	83.8%
Apr-2020	97.8%
May-2020	96.0%
Jun-2020	96.1%
Jul-2020	96.0%
Aug-2020	95.1%
Sep-2020	95.5%
Oct-2020	95.3%
Nov-2020	96.5%
Dec-2020	96.0%
Jan-2021	95.7%
Feb-2021	92.3%
Mar-2021	89.4%
Apr-2021	77.8%
May-2021	76.1%
Jun-2021	68.8%

**Source: CHKS (Cwm Taf Morgannwg)
Run Date: 8th Sep 2021**

Mortality Indicator Ref No 20: % of Deaths in Hospital by Place of Occurrence

Percentage of deaths by place of occurrence 2020

LHB Area	Home	Care Home		Hospices		Hospitals (acute or community not psychiatric)		Other communal establishments	Elsewhere
		Local Authority	Non-Local Authority	NHS	Non-NHS	NHS	Non-NHS		
Betsi Cadwaladr University	27.8%	1.4%	17.6%	0.0%	2.8%	47.8%	0.0%	0.2%	2.4%
Powys Teaching	28.8%	3.9%	16.6%	0.0%	2.2%	46.3%	0.0%	0.0%	2.1%
Hywel Dda	32.9%	2.5%	18.7%	0.0%	0.7%	42.7%	0.0%	0.1%	2.3%
Aneurin Bevan	28.5%	1.6%	14.9%	0.0%	2.0%	50.3%	0.0%	0.3%	2.5%
Cardiff and Vale University	29.3%	0.2%	18.7%	0.0%	4.2%	45.6%	0.0%	0.0%	2.0%
Cwm Taf Morgannwg	27.3%	1.5%	13.4%	0.0%	0.0%	55.4%	0.0%	0.5%	1.8%
Swansea Bay	28.1%	0.7%	19.3%	0.0%	0.1%	46.9%	0.0%	1.0%	3.9%
WALES	28.8%	1.5%	16.9%	0.0%	1.7%	48.3%	0.0%	0.3%	2.5%

Number of deaths by place of occurrence 2020

LHB Area	Home	Care Home		Hospices		Hospitals (acute or community not psychiatric)		Other communal establishments	Elsewhere	Total Deaths
		Local Authority	Non-Local Authority	NHS	Non-NHS	NHS	Non-NHS			
Betsi Cadwaladr University	2,384	120	1,508	0	242	4,105	0	18	208	8,585
Powys Teaching	497	68	287	0	38	798	0	0	37	1,725
Hywel Dda	1,593	120	907	0	35	2,069	0	5	111	4,840
Aneurin Bevan	1,999	114	1,048	0	138	3,529	0	19	175	7,022
Cardiff and Vale University	1,335	8	855	0	191	2,079	0	2	91	4,561
Cwm Taf Morgannwg	1,572	84	773	0	2	3,189	0	30	105	5,755
Swansea Bay	1,380	35	950	0	4	2,301	0	49	192	4,911
WALES	10,760	549	6,328	0	650	18,070	0	123	919	37,399

Source: ONS

[Deaths registered in England and Wales - Office for National Statistics \(ons.gov.uk\)](https://www.ons.gov.uk)

Next Update: to be announced

Mortality Indicator Ref No 21: Deprivation % of Lower-layer Super Output Areas in Most Deprived 20%

Welsh Index of Multiple Deprivation (WIMD) 2019

UA Area	Number of LSOAs	% of LSOAs in most deprived 10%	% of LSOAs in most deprived 20%	% of LSOAs in most deprived 30%	% of LSOAs in most deprived 50%
Isle of Anglesey	44	2%	14%	18%	39%
Gwynedd	73	3%	5%	8%	34%
Conwy	71	6%	13%	20%	41%
Denbighshire	58	12%	16%	22%	47%
Flintshire	92	3%	11%	20%	32%
Wrexham	85	7%	12%	28%	41%
Powys	79	1%	6%	11%	24%
Ceredigion	46	2%	4%	7%	46%
Pembrokeshire	71	6%	11%	15%	42%
Carmarthenshire	112	4%	11%	27%	54%
Swansea	148	11%	24%	31%	46%
Neath Port Talbot	91	15%	33%	45%	69%
Bridgend	88	7%	20%	40%	56%
Vale of Glamorgan	79	4%	13%	19%	35%
Rhondda Cynon Taf	154	18%	29%	45%	71%
Merthyr Tydfil	36	22%	31%	50%	78%
Caerphilly	110	10%	24%	38%	63%
Blaenau Gwent	47	13%	45%	64%	85%
Torfaen	60	5%	32%	42%	57%
Monmouthshire	56	0%	2%	5%	20%
Newport	95	24%	35%	40%	60%
Cardiff	214	18%	28%	35%	49%
Wales	1909	10%	20%	30%	50%

Source: StatsWales

Next Update: to be confirmed

<https://statswales.gov.wales/Catalogue/Community-Safety-and-Social-Inclusion/Welsh-Index-of-Multiple-Deprivation/WIMD-2019/localauthorityanalysis>