

Safeguarding & Public Protection Annual Report

2024/2025



Prepared by
Claire O'Keefe, Head of Safeguarding



GIG
CYMRU
NHS
WALES

Bwrdd Iechyd Prifysgol
Cwm Taf Morgannwg
University Health Board

Table Of Content

- | | |
|-----------|--|
| 3 | Foreword by Claire O’Keefe, Head of Safeguarding |
| 4 | Key Areas of Work |
| 5 | Organogram Structure |
| 6 | Safeguarding Children |
| 9 | Looked After Children |
| 11 | Adults at Risk |
| 14 | Violence Against Women, Domestic Abuse, & Sexual Violence |
| 16 | Deprivation of Liberty Safeguards |
| 18 | Mental Capacity Act |
| 20 | Training & Learning |
| 22 | Partnership Working |
| 23 | Multi-Agency Safeguarding HUB |
| 25 | Glossary |
| 26 | Summary & Conclusion |

Foreword

This report demonstrates the effective leadership, commitment & operational support in all aspects of Safeguarding & Public Protection across Cwm Taf Morgannwg University Health Board & how the UHB complies with legislation, external standards & good practice guidance.

What does Safeguarding & Public Protection look like in Cwm Taf Morgannwg University Health Board (CTMUHB)?

Since April 2019 Cwm Taf Morgannwg Health Board incorporates the local authority areas of Bridgend, Merthyr Tydfil & Rhondda Cynon Taf with a total population of almost 440,000. Services are also provided to those living within neighbouring authorities.

Safeguarding in Cwm Taf Morgannwg involves working with our colleagues & partner agencies to protect & prevent children & adults at risk of abuse, neglect or other kinds of harm.

Public Protection seeks to protect, promote & improve the health, safety & well-being of our population across Cwm Taf Morgannwg.

Strategic Objectives for Safeguarding & Public Protection:

- There are effective measures in place within CTMUHB to safeguard people & protect children & adults at risk who are accessing its services.
- There is effective inter-agency co-operation in planning & delivering safeguarding & public protection services & in sharing information.

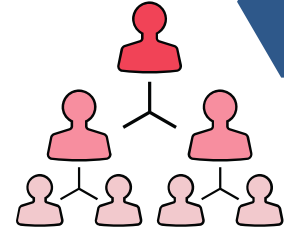
The Health Board works within regional partnership arrangements throughout Cwm Taf Morgannwg



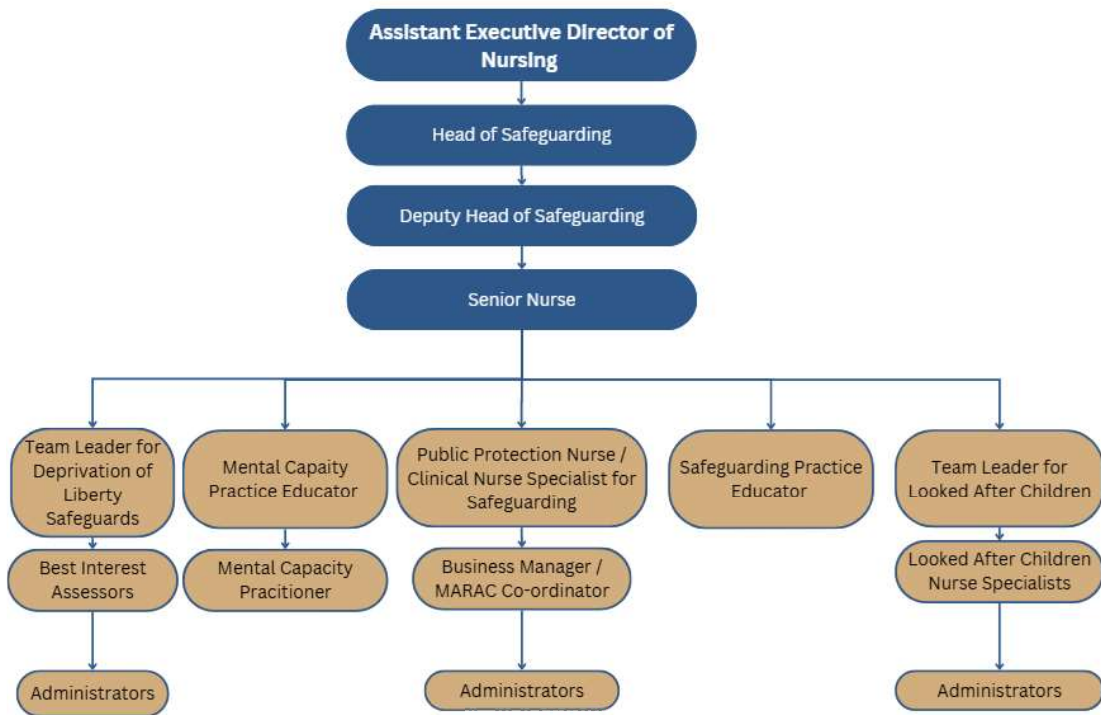
Key Areas of Work

<p>Digital questionnaires have been launched to capture the views of children and young people in respect of their experiences of health assessments</p>	<p>Joint bespoke training between Safeguarding & Mental Capacity Act Practice Educators to share learning from incidents and reviews</p>	<p>Development of guidance and flowchart to guide practitioners in the management of anogenital warts in children and young people. In addition, information leaflets to guide children, young people and their parents and carers</p>
<p>In response to learning from Child T's practice review, in collaboration with Paediatric services a 'Jump' pathway was developed to ensure colleagues are aware of appropriate escalation processes</p>	<p>Numerous events delivered to colleagues across health and partner agencies throughout safeguarding week</p>	<p>An annual audit plan was developed and delivered to reflect recommendations from the Joint Inspection of Child Protection Arrangements and Rapid Review</p>
<p>Level 1 and 2 Mental Capacity Act & Deprivation of Liberty Safeguards training completed as an all Wales collaboration via the All Wales Task & Finish group</p>	<p>Development of a safeguarding supervision request form and feedback form to measure quality of supervision provided</p>	<p>During safe sleep week stands and displays were set up in various sites to reinforce safe sleep practice. Safe sleep audits were also undertaken evidencing that 88% of documentation reflected safe sleep advice being provided to new parents</p>
<p>High compliance of women being asked about Domestic Abuse by health board staff and support sought from the hospital based Independent Domestic Violence Advocate when disclosures were made to gain the appropriate support and advice</p>	<p>Review and development of updated bruising and injuries in non-independently mobile children for secondary care services. Following feedback from parental experiences of safeguarding processes, developed a leaflet to support those affected</p>	<p>A number of health board colleagues from safeguarding and mental health have supported practice, domestic homicide and offensive weapon reviews. Learning from these reviews has been shared across multiple forums</p>
<p>Welsh Government funding was again utilised to commission an external agency to support with the completion of DoLS assessments, significantly reducing the backlog</p>	<p>As partners of the Multi-Agency Safeguarding Hub, contributed to an independent review of Cwm Taf MASH. Collaboratively exploring improved ways to communicate and share information in the absence of a co-located MASH</p>	<p>Redesign of the health boards safeguarding intranet page to ensure colleagues are supported during and out of hours to respond to safeguarding concerns</p>

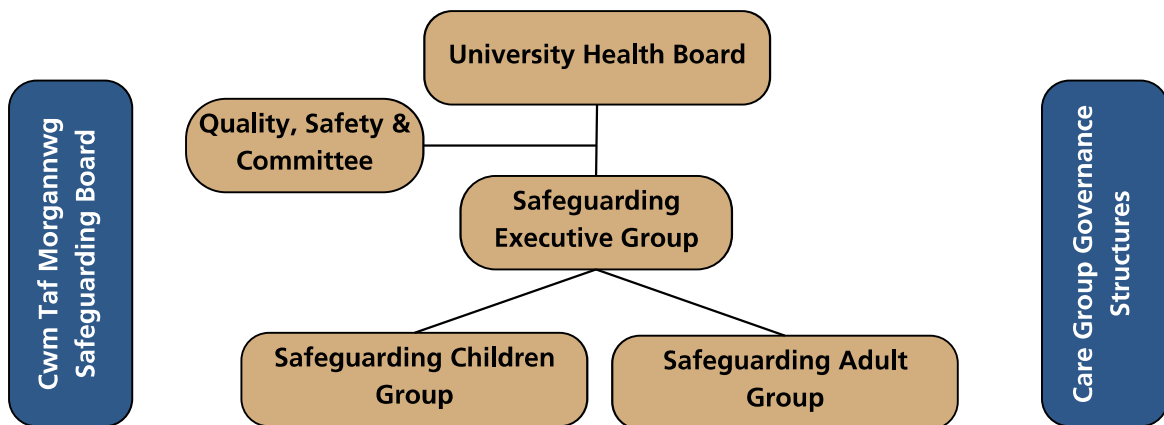
Organogram Structure



Corporate Safeguarding & Public Protection Team



Governance Arrangement & Reporting Structure



This chart illustrates the governance arrangements that supported the CTMUHB Safeguarding Team in fulfilling their statutory duties during 2023/2024. Quarterly reports were shared with the Safeguarding Executive Group for oversight & scrutiny

Safeguarding Children

Our Aim

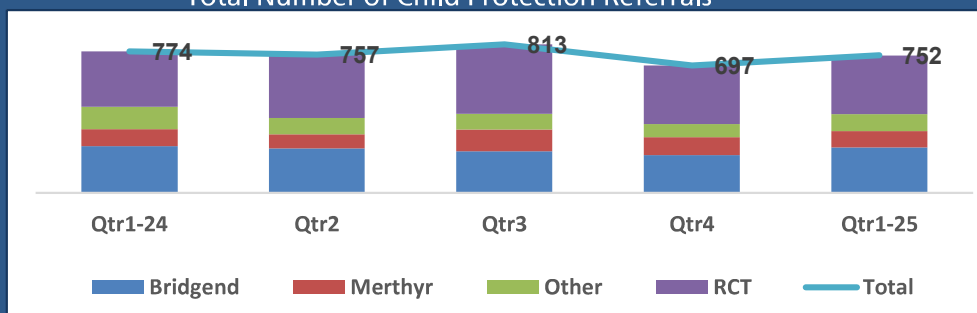
To ensure that children and young people in Cwm Taf Morgannwg, up to the age of 18, are protected from abuse, neglect or other kinds of harm and are prevented from becoming at risk of abuse, neglect or other kinds of harm and they live in an environment that promotes their wellbeing.



To ensure that the UHB complies with the related legislation & Procedures:

- Social Services & Wellbeing (Wales) Act 2014 – Part 7
- Children Acts 1989 & 2004
- Wales Safeguarding Procedures 2019

Total Number of Child Protection Referrals



During 24/25 CTMUHB have continued to strengthen safeguarding arrangements, building on the recommendations from the Strengthening Safeguarding in Health Review (2024).

A significant amount of work has been undertaken to look at how data and themes are captured throughout the health boards services. This work has included how CTMUHB increase visibility to services across the organisation, deliver data and quality assurance in respect of safeguarding.

During 24/25 all safeguarding specialists restructured under the management of the corporate safeguarding team. This has ensured the delivery of the health boards priorities within the safeguarding strategy. In addition, supported wider delivery of training and education, ensuring professional development for all of those individuals working within safeguarding.

Secondary Care Bruising Injuries Policy & Leaflet.

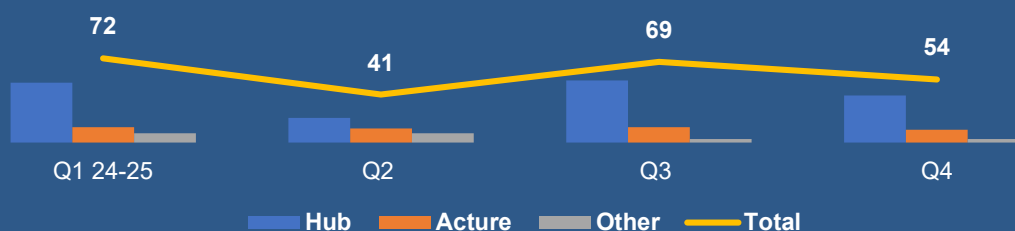
In response to learning and incidents, a secondary care policy for bruising and injuries in non mobile children was renewed in partnership with the Named Doctor for Safeguarding, paediatric and emergency care colleagues. This ensures a consistent approach to the reporting arrangements and information sharing across agencies. A leaflet was also designed for use by parents and carers.

7

What did we do

- Learning events and skills days were delivered by safeguarding specialists to colleagues in Specialist Community Public Health Services. These sessions shared learning from incidents, audits and practice reviews. Building on identified good practice and influencing change in identified areas for improvement.
- This year the corporate safeguarding team have worked closely and in partnership with the school nursing service to develop processes and procedures that support a consistent approach in safeguarding school aged children.
- To ensure improvements within child protection processes are driven by the experiences of children and young people, questionnaires have been enhanced and made digitally available. These feedback opportunities have been extended to all three Paediatric wards, this ensures that experiences and improvements are aligned across both the Hub and wards.
- Led by the named Doctor for safeguarding a multi-agency training day was delivered in partnership with South Wales Police, education and Bridgend Local Authority. With the support of some external speakers covered topics such as exploitation, Sexual Assault Referral Centre, injuries in children non independently mobile and fabricated illness. The day was evaluated well and was delivered a second time in April 25. This training was in addition to a catalogue of training delivered to Paediatric and Emergency Department medical colleagues.
- The School Nursing Service have held workshops across the service to improve the focus of their conference report writing. The emphasis on the workshops to ensure that practitioners are providing relevant and proportionate information, and are able to interpret, analyse and explain their information for the benefit of the child and other professionals.
- An annual audit plan was undertaken in partnership with Health Visiting, School Nursing and Paediatrics to provide quality assurance in respect of child protection processes.

Total Child Protection Medicals



Quarter	Hub	Acture	Other	Total
Q1 24-25	~35	~10	~5	72
Q2	~15	~10	~5	41
Q3	~35	~10	~5	69
Q4	~25	~10	~5	54



<https://youtu.be/nfxD7F9LsH0>

A video has been produced by a safeguarding specialist nurse based at the child protection medical hub with the support of medical illustrations at CTMUHB. This video is aimed to take children and young people through the journey of a child protection medical.



Safeguarding & Public Protection
Annual Report 2024/25



- Stands with posters were arranged within Community Hospitals
- Resources were given out to staff, parents and carers
- Cots were set up in each location with props to demonstrate safe sleeping.
- Engagement from new parents, grandparents and other relatives.
- Posts by the Lullaby Trust were regularly shared through out the maternity service platforms.

WHAT'S NEXT?

In response to learning from reviews, revision of the health boards multiple birth pathway and training

Utilising safeguarding supervision feedback forms and logs, measure the safeguarding teams visibility to the CTMUHB workforce

Develop communications, training and resources to support the launch of the regional exploitation strategy

Continue to strengthen partnership working between the corporate safeguarding team and wider services in identifying improvement opportunities to safeguard children within Cwm Taf Morgannwg

Drive improvements in the quality of child protection referrals through audit and training

Looked After Children

Our Aim

To guarantee that Children in Care have their physical, emotional, and mental health requirements fulfilled. This includes conducting timely assessments, making referrals, & providing access to necessary healthcare services.

To ensure that the UHB complies with the related legislation & Procedures:

- Social Services & Wellbeing (Wales) Act 2014 – Part 6
- Towards a Stable Life & Brighter Future 2007 [statutory health assessments]
- The Care Planning, Placements, & Case Review (Wales) Regulations



What did we do

- Completed an audit plan to measure the quality of health assessments and health care needs form
- Developed a leaving care leaflet to support young people
- Launched the CIVICA survey. The results will be used to ensure service improvements are led by the voice of those who receive the service.
- CTMUHB signed the Corporate Parenting Pledge, and developed strategic health plans
- Streamlined and improved processes that have reduced the back log
- Completed bespoke work with health visiting to improve the quality of the under-five review health assessments.
- Worked with the Quality Improvement (QI) team to redesign the database to feed into a power BI data dashboard to reflex data for executive group, corporate parenting board and Welsh Government data

In Wales:
67.5%
OF CHILDREN COMING INTO CARE HAVE EXPERIENCED ABUSE OR NEGLECT.



1443 Looked After Children in CTMUHB

200 Health Assessments completed outside CTMUHB

232 Children placed outside CTMUHB

1307 (>16.2%) Health Assessments completed by CTMUHB

WHAT'S NEXT?

Build on digital resources for both CTMUHB staff and forward facing intranet pages

To eradicate any backlog by the end of the year through continued improvement strategies

Explore possibilities within the service to redesign. Ensuring the service continues to meet the healthcare needs of children and young people, who are care experienced

Devising resources to introduce the role of the Looked After Children Nurse and health assessment expectation to young people entering care

Build closer working relationships with partner agencies to strengthen joined up working. Promoting the role of the Looked After Children Nurse to foster carers and develop more joined up foster carer training

Safeguarding Adults

Our Aim

To ensure that adults in Cwm Taf Morgannwg, over the age of 18, are protected from abuse, neglect, or other kinds of harm and are prevented from becoming at risk of abuse, neglect, or other kinds of harm, and they live in an environment that promotes their wellbeing.

To ensure that the UHB complies with the related legislation and Procedures:

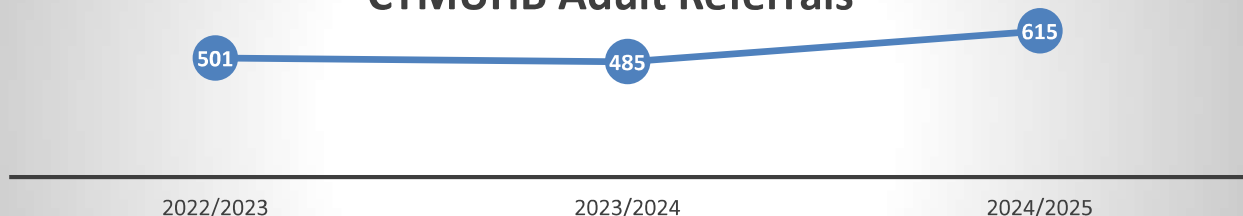
- Social Services & Wellbeing (Wales) Act 2014 – Part 7
- Health & Social Care (Quality & Engagement) (Wales) Act 2020



What did we do

- CTMUHB took over the health services at HMP Parc in October 2024. To ensure an integrated response to safeguarding concerns, training was delivered in partnership with wider multi-agency colleagues to HMP Parc staff, sharing learning from incidents and concerns. In addition, pathways were developed to strengthen safeguarding processes.
- Recognising the complexities around adult safeguarding and in response to learning from an incident, safeguarding supervision has been extended to district nursing and wider health services. A safeguarding supervision request form has been developed and embedded into the revised safeguarding supervision standard operating procedure.

CTMUHB Adult Referrals



- In response to learning around neglect and self neglect, a bespoke safeguarding and MCA training package was developed and delivered across the district nursing service in CTMUHB.
- This year, an adult safeguarding and mental capacity act practitioner role was recruited to lead on the management of complex adult safeguarding cases, ensuring improvements within adult safeguarding are equal consideration in the delivery of the health boards strategy.

Allegations made Against Professionals

Our Aim

To ensure that patients/clients are safe in our care. To ensure that staff understand they have a duty to report concerns about the behaviour of other staff members.
Raise awareness with our staff that their behaviour outside of work can directly impact on their working role.

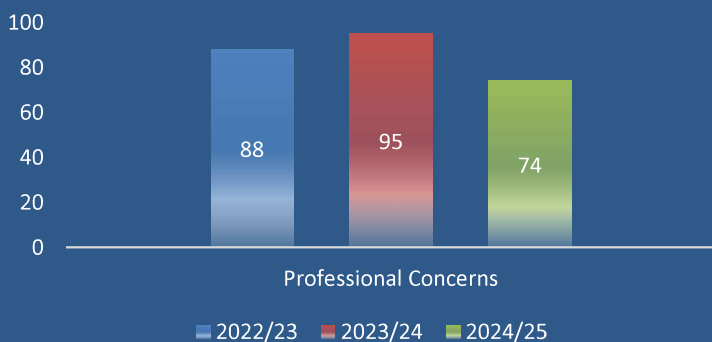
Ensuring that there are effective inter-agency safeguarding processes and practice in place. That these are supported by robust workforce processes and risk assessments to ensure a proportionate response to concerns whilst safeguarding our patients/clients.



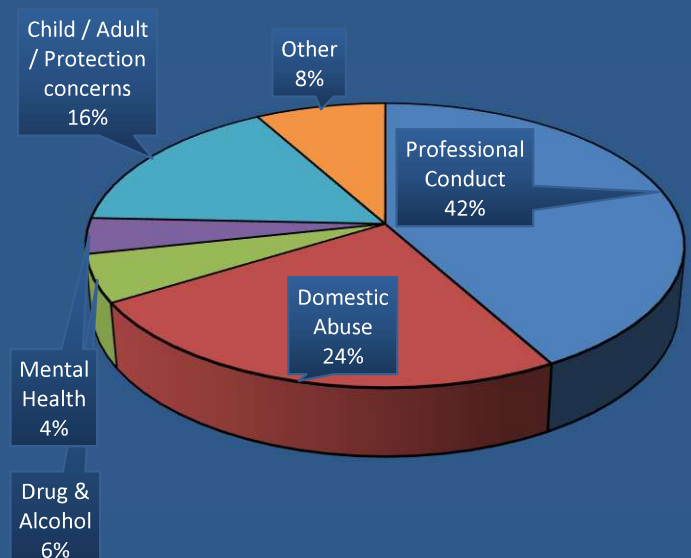
What did we do

- The health boards policy was updated to ensure colleagues have access to clear guidance in the management of concerns for those in a position of trust. Also, ensuring those subject to these procedures are signposted to appropriate support for their wellbeing.
- A training package was developed to support managers in ensuring a consistent and equitable approach to the management of reported concerns. This was delivered to managers through the senior nurse forum, safeguarding operational groups and care group quality, safety and patient experience forums.
- A number of staff from safeguarding, people services and care groups attended training in respect of the Disclosure and barring service.

Total Referrals



Concern / Allegation



WHAT'S NEXT?

This year CTMUHB are committed to utilising the Once for Wales safeguarding module for the management of allegations made against a person in a position of trust

Continue to promote a culture of safety where safeguarding concerns can be raised across all areas of the health board

Safeguarding will be working with colleagues within the care groups and people services to develop a sexual safety policy. This will include the management of staff alleged to have been a perpetrator of sexual abuse and assault

In partnership with adult services across CTM align the reporting and management of avoidable pressure damage with the revised All Wales Pressure Damage Guidance 2024

The training package for reporting persons in a position of trust will be delivered through a Link and Learn session. It will also be made available through the health boards redesigned intranet page

Violence Against Women Domestic Abuse Sexual Violence

Our Aim

Individuals who are victims of violence against women, domestic abuse, and sexual violence are treated and supported in a way that optimises their potential and life chances.

To ensure that the UHB complies with the related legislation & Procedures:

- Violence Against Women Domestic Abuse & Sexual Violence (Wales) Act 2015
- Female Genital Mutilation Act 2003 (amended by Serious Crime Act 2015)
- Domestic Abuse Act 2021

What did we do



136 Number of new victim referrals to support services in the reporting period

76 Number of new victims supported in the reporting period

101 Total number of supported victims (new and existing) during the reporting period

62 Number of victims who have concluded support and exited the service within the reporting period

Outcomes

Improved Health and Wellbeing	39
Better informed and empowered...	68
Increased feelings of safety	56

White Ribbon Week

- The health Independent Domestic Violence Advocate (IDVA) attended Community Hospitals in partnership with Samaritans to raise awareness of individuals who may be at a higher risk of suicide due to domestic abuse.
- Training sessions were delivered on hidden victims
- Promoted the week on health board intranet site with contact numbers for staff support

I can't thank the IDVA service enough for being there and all the support I have had I can finally see the light at the end of the tunnel after 17 years when you are in it you never think you will get out

- Survivor of Health IDVA

Routine Enquiry Audit – Maternity

An audit was undertaken using 100 randomly selected set of maternity records showed that 91% of women were asked about Domestic Abuse in pregnancy and of the 91%, 83% were asked more than once. This is slightly less than the 95% compliance for 23/24. However, out of the sets of records audited where 10 women were not asked about domestic abuse, there was evidence that the women attended their appointment accompanied on numerous occasions, so the opportunity to ask routine enquiry was not available.

WHAT'S NEXT?

Ensure staff have the confidence to routinely ask service users if they feel safe, in anyone is harming them or if they need help. This will be achieved through a training plan for 24/25

In line with the health boards safeguarding strategy, deliver awareness sessions to staff to include blueprint workstreams. In particular, children and young people, older people and work place harassment

Utilising Value Based Health Care funding expand the health IDVA provision across CTMUHB

Expand routine enquiry to wider service groups and embed the routine enquiry audit in line with all Wales routine enquiry standards

Deprivation of Liberty Safeguarding

Our Aim

Ensure that the UHB follows the defined legislative processes and discharges the functions of the Supervisory Body and the Managing Authority.

To protect people who for their own safety and in their own best interests need care and treatment that may deprive them of their liberty but who lack the capacity to consent and where detention under the Mental Health Act 1983 is not appropriate at that time.

1547 DoLS applications (15% increase on previous year)

Of 1547, 87% (1348) of referrals were an Urgent Authorisation

581 DoLS authorisations granted

What did we do

- Utilised an external agency to reduce the DoLS backlog
- Collaborative work with the Public Health Wales (All-Wales) Mental Capacity Act and Deprivation of Liberty Safeguards NHS Workforce Group
- Participation in the Consent Working Group, the Ethics Committee and Adult Frailty Group.
- Publication of the CTMUHB DoLS Policy and Standard Operating Procedure
- Development of a new DoLS audit to be used on the hospital wards
- Created a new streamlined database for monitoring and reporting
- Collaborative work with BCUHB and SBUHB to create an All-Wales DoLS Form 1, which is currently under a pilot phase
- Continue to embed MCA and DoLS practices across CTMUHB



WHAT'S NEXT?

Commissioning of an external agency to further reduce the DoLS backlog

Roll out of a new DoLS audit to be used by wards throughout the Health Board

The commencement of a Court of Protection Lead Nurse for CTMUHB

Continue to embed MCA and DoLS practice throughout CTMUHB

Lead on a new joint contract with the Local Authorities for Relevant Person's Representative (RPR) that facilitates the transfer of the RPR with the patient from hospital to care home and vice versa

Implementation of a new DoLS Power BI dashboard that will be used in conjunction with the Electronic White Board on the wards improving authorisation compliance

Mental Capacity Act

Our Aim

The Mental Capacity Act provides a legal framework for acting and making decisions on behalf of individuals who lack the mental capacity to make particular decisions for themselves.

Everyone working with and/or caring for an adult who may lack capacity to make a specific decision, must consider and comply with this Act when making decisions or acting for that person, when the person lacks the capacity to make a particular decision for themselves. The same rules apply whether the decisions are life-changing events or everyday matters.

What did we do

- Appointment of a Safeguarding / MCA Nurse Specialist.
- Ongoing MCA and DoLS training continues with training compliance (Mandated since Sept 2023) increasing again this year. Currently to be undertaken 2 yearly for level 3, and 3 yearly for levels 1 & 2.



Overall compliance is 67.71%.

Level 1 is 79.73%

Level 2 is 86.17%

Level 3 is 53.17%

- In collaboration with Safeguarding and DoLS teams, safeguarding days were undertaken where joint learning had been identified. Training was facilitated for those groups, this included at least 6 sessions in 2025 for district nursing teams. This offered opportunities to increase knowledge around safeguarding and the application of MCA, with the use of real life anonymised experiences.
- Development of a digital MCA assessment form, ensuring a robust and holistic assessment is made throughout CTMUHB services.
- Colleagues across CTMUHB services have been supported with undertaking and completion of MCA assessments; these services include tissue viability, diabetes, medical and nursing staff. Feedback in respect of support is captured through the use of a Microsoft form.



WHAT'S NEXT?

Completion of a summarised relevant court of protection caselaw library in SharePoint for Healthcare staff

Update SharePoint site to include practical tips and caselaw summaries for all MCA related subjects and common issues

In collaboration with colleagues across NHS Wales health boards, continue to progress with alignment of level 3 MCA & DoLS training with the updated Adult Safeguarding: Roles and Competencies for Health Care Staff: intercollegiate document (2024)

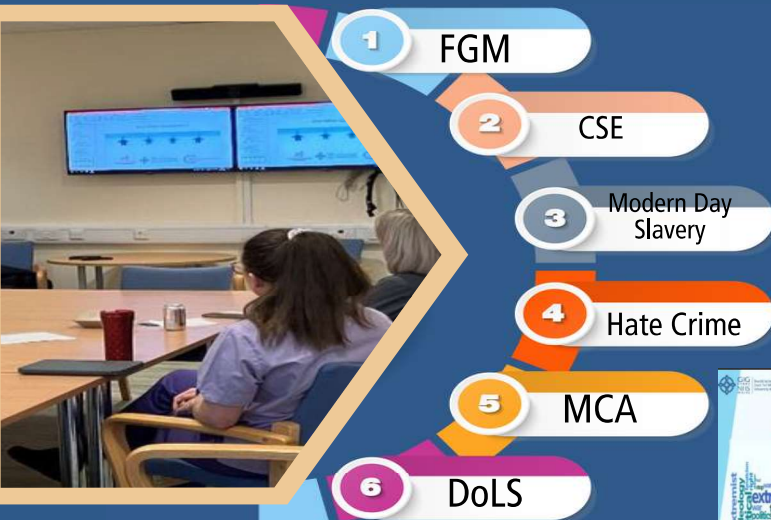
Training & Learning

Our Aim

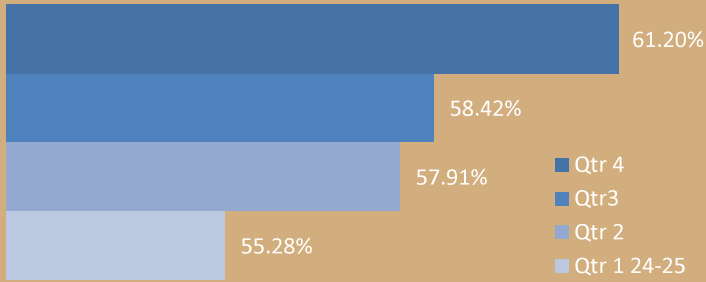
To ensure CTMUHB staff are sufficiently trained and competent to be alert to the potential indicators of abuse, including concerns about the behaviour of staff, and know how to act and report on those concerns in order to fulfil statutory safeguarding duties under the Children Act 1989 and 2004, the Social Services and Well-being (Wales) Act 2014, the Violence Against Women, Domestic Abuse and Sexual Violence Act 2016, and the Counter-Terrorism and Security Act 2011.

What did we do

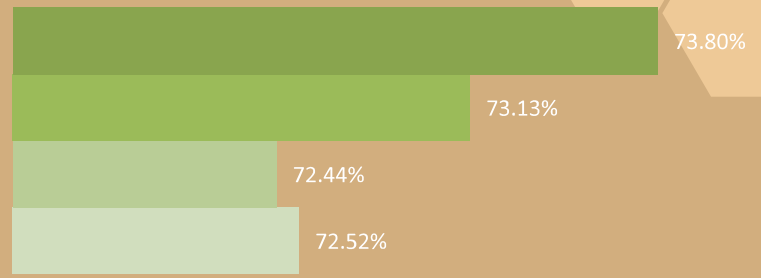
- In July 2024 a practice educator was appointed to the safeguarding team to ensure delivery of the health boards safeguarding training strategy
- Level 3 safeguarding training compliance was increased from 51.39% to 61.20% with all services within Children and Families Care group exceeding 80%
- Additional bespoke multi agency level 3 training sessions with the Clinical Practice Educator for MCA & DoLS, and the Independent Domestic Violence Advocate have been completed with Primary Care (District Nursing Service Across CTM, and the General Practitioners).
- Redesign of SharePoint page to include a training and education resource library
- Level 3 competencies and compliance are reviewed regularly to ensure they are in line with the Intercollegiate Documents and National Training Frameworks.
- A quarterly Newsletter has been launched providing updates on topical issues and training opportunities.
- Quarterly meetings are currently being held with Primary and Community Care Education and Training Academy to provide training and Education across CTM. This is in joint partnership with the named Doctor for Safeguarding, and includes the Foundation Doctors across the Health Board.
- The Safeguarding and Training Learning group has been initiated and will meet 3 monthly at this time to allow for growth in numbers, and diversity of services. This will allow all staff across CTM to have an overhaul voice in their training and educational needs.
- The development of a CTMUHB monitoring group to ensure actions and learning from reviews and incidents are shared across services and embedded.



Level 3 Safeguarding Training



Violence Against Women, domestic Abuse & Sexual Violence - Level 1



WHAT'S NEXT?

Monthly Link and Learn sessions are in development with colleagues across health to facilitate an array of learning opportunities for both nursing and medical colleagues across CTMUHB services

Development of a training plan to deliver the Violence Against Women Domestic Abuse and Sexual Violence National Training Framework

Explore opportunities to deliver and measure compliance for level 3 safeguarding across CTMUHB workforce

All short training packages will be recorded and made available within the safeguarding training and education intranet pages. Work is in progress with the communications team to ensure these resources reach staff on the frontline

Work with colleagues across the network and National Safeguarding Service to establish a consistent approach in the delivery of PREVENT training

Partnership Arrangements

Our Aim

Through collaborative working with our partner agencies, that children and adults at risk in the Cwm Taf Morgannwg area are able to live safe lives.

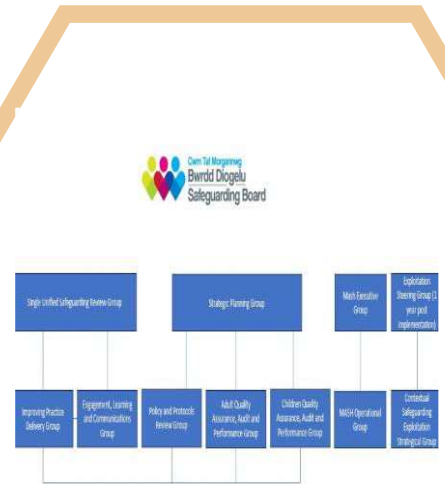
Safeguarding in Cwm Taf Morgannwg is overseen by the regional multi-agency Cwm Taf Morgannwg Safeguarding Board with responsibility for:

- Safeguarding Children and Adults at Risk
- Deprivation of Liberty Safeguards
- Multi-Agency Safeguarding Hub (MASH)

The responsibilities & functions of the Board are set out in the statutory guidance under Part 7 of the Social Services & Wellbeing (Wales) Act 2014

What did we do

- CTMUHB is represented on the Safeguarding Board by the Deputy Director of Nursing and the Head of Safeguarding.
- Individuals from the corporate safeguarding team represent CTMUHB at all sub groups of the Regional Safeguarding Board and Community Safety Partnership, including; Channel Panel, Exploitation meetings, MAPPAs and the suicide prevention steering groups. To ensure there is effective inter-agency co-operation in planning and delivering protection services and in sharing information.
- In collaboration with partners of the Safeguarding Board CTMUHB contributed to the Boards development day to develop priorities and review the current sub structures. The Head of Safeguarding, Deputy Head of Safeguarding and Senior Nurse all contribute to the delivery of sub groups through chairing or vice chair arrangements.
- Jointly developed policies with the regional safeguarding board and contributed to multi-agency audits.



Prevent Strategy



Multi-Agency Safeguarding HUB

MASH

23

Our Aim

Through collaborative working with our partner agencies, that children and adults at risk in the Cwm Taf Morgannwg area are able to live safe lives.

MASH facilitates safeguarding by working together, in one place, sharing information and making collaborative decisions. Through MASH, a timely and proportionate approach to the identification, assessment and management of safeguarding, child and adult protection enquiries can be achieved. MASH is the 'front door' for all adult and child safeguarding referrals, including high risk domestic abuse.

What did we do

- There currently remains two different working models across both the MASH in Bridgend and Cwm Taf. CTMUHB took part in an independent review of the effectiveness of MASH, contributing to new ideas to enhance multi-agency working.
- CTMUHB are working closely with partners to ensure effective communication and Information sharing in the protection of children and adults.
- The CTM MASH Health Team have continued to locate themselves within Bridgend MASH and maintain a presence on a hybrid basis at Cwm Taf MASH.
- A review of current health processes has been undertaken to ensure quality assurance is effective in the health board's referrals, database management and the management of allegations against a person in a position of trust.
- In addition to this Health have developed a Duty Desk model to ensure a consistent, proactive approach is available to all health staff accessing advice and support. This model includes a Public Protection Nurse allocated on a rota basis to managing the MASH health inbox, quality assuring all referrals and receiving telephone calls from health staff. Ensuring early communication and intervention with colleagues in the identification of those who may be at risk



WHAT'S NEXT?

Development of a MASH Health standard operating procedure, ensuring robust processes are in place to enhance multi-agency working arrangements

Establish any new processes and multi-agency working arrangements for Health, following the Cwm Taf Morgannwg MASH review

Further exploration in to the use of Once for Wales safeguarding module to improve data collection and identify themes and trends in safeguarding

The development of new data collection dashboard and reporting template to align with National Data Assurance Framework

Glossary

Child & Adolescent Mental Health Services	CAMHS	Specialised health services that assess and treat young people with emotional, behavioural or mental health difficulties.
Child Protection Conference	CPC	A multi-agency meeting between a child's parents/carers, the child (if appropriate) and practitioners involved in the child's care, organised by the local authority. The aim of the conference is to look at all the relevant information and decide what steps need to be taken to ensure the safety and welfare of the child.
Child Sexual Exploitation	CSE	A form of child sexual abuse where an individual or group takes advantage of a power imbalance to coerce, manipulate or deceive someone under the age of 18 into sexual activity in exchange for something the victim needs or wants, and/or for financial advantage or increased status of the perpetrator. The victim may have been sexually exploited even if the sexual activity appears consensual. Child sexual exploitation does not always involve physical contact; it can also occur using on line technology including social media platforms.
Joint inspection of child protection arrangements	JICPA	Joint inspections to assess how local authorities, police and health services in Wales work together to help and protect children. The joint inspection of <u>child</u> protection arrangements (JICPA) is a Welsh only inspection and is similar to the <u>joint targeted area inspections</u> (JTAI) in England.
Looked After Children	LAC	A child who has been in the care of their local authority for more than 24 hours.
Multi-Agency Safeguarding Hub	MASH	The purpose of a MASH is to bring together different agencies to enable fast information sharing with the purpose of making an efficient and fast decision to safeguard vulnerable children.
Multi-Agency Public Protection Arrangements	MAPPA	A set of statutory arrangements to assess and manage the risk posed by certain sexual and violent offenders.
Multi-agency risk assessment conference	MARAC	A meeting involving statutory safeguarding partnerships and other services to share information and discuss those at the highest risk of domestic abuse to create a coordinated action plan.
Prevent		One part of the governments overall counter-terrorism strategy.
Procedural Response to Unexpected Deaths in Childhood	PRUDiC	This procedure sets a minimum standard for a response to unexpected deaths in children and young people up to the age of their 18 th birthday. It describes the process of communication, collaborative action and information sharing following an unexpected death.

Summary and Conclusion

The 2024/2025 Safeguarding and Public Protection Annual Report for Cwm Taf Morgannwg University Health Board (CTMUHB) highlights the extensive efforts and significant achievements in safeguarding children, looked after children, adults at risk, and addressing violence against women, domestic abuse, and sexual violence (VAWDASV). The report underscores the Health Board's commitment to ensuring compliance with legislation, promoting good practice, and fostering effective inter-agency cooperation.

Key Achievements

1 Training & Education

- Bespoke safeguarding training delivered across services to both medical and nursing staff groups.
- Development & dissemination of educational resources to embed Mental Capacity Act principles, along with joint training with safeguarding.
- Enhanced safeguarding supervision with a restorative approach.

2 Partnership Working

- Ongoing collaboration with nursing & medical colleagues, regional safeguarding boards, & external agencies.
- Contributions to regional & national safeguarding initiatives, including child & adult practice reviews.
- Development of regional policies and procedures

3 Operational Improvements

- Reduction in the Deprivation of Liberty Safeguards assessment backlog through external support.
- Implementation of policies and standard operation procedures to provide a consistent and equitable approach to safeguarding.
- Introduction of safeguarding duty desk to provide additional scrutiny of safeguarding referrals.

4 Special Initiatives

- Development of resources & training to support the management of concerns for those in a position of trust.
- Ongoing review into health representation at Multi Agency Risk Assessment Conference (MARAC) to improve multi-agency responses to domestic abuse & violence.

5 Audit & Compliance

- Extension of the annual audit plan to include DoLS & Paediatrics. In addition, enhancement of current safeguarding and routine enquiry audits.
- Enhanced procedures for managing allegations against professionals & improving data collection.

6 Innovative Practices

- Utilisation of technology & feedback mechanisms to ensure the voice of the child is central to service delivery.
- In partnership with the health boards quality improvement team, redesigned and streamlined systems for improved data collection and quality.

Conclusion

CTMUHB has demonstrated strong leadership and commitment in safeguarding and public protection, addressing both immediate needs and long-term improvements across multiple areas. The health board's proactive approach, evidenced through extensive training, robust partnership working, and innovative solutions, ensures that children, adults at risk, and victims of domestic abuse receive the necessary protection and support. Moving forward, CTMUHB aims to build on these successes, continuously enhancing their safeguarding framework to adapt to emerging challenges and maintain high standards of care and protection for all individuals within their remit.