

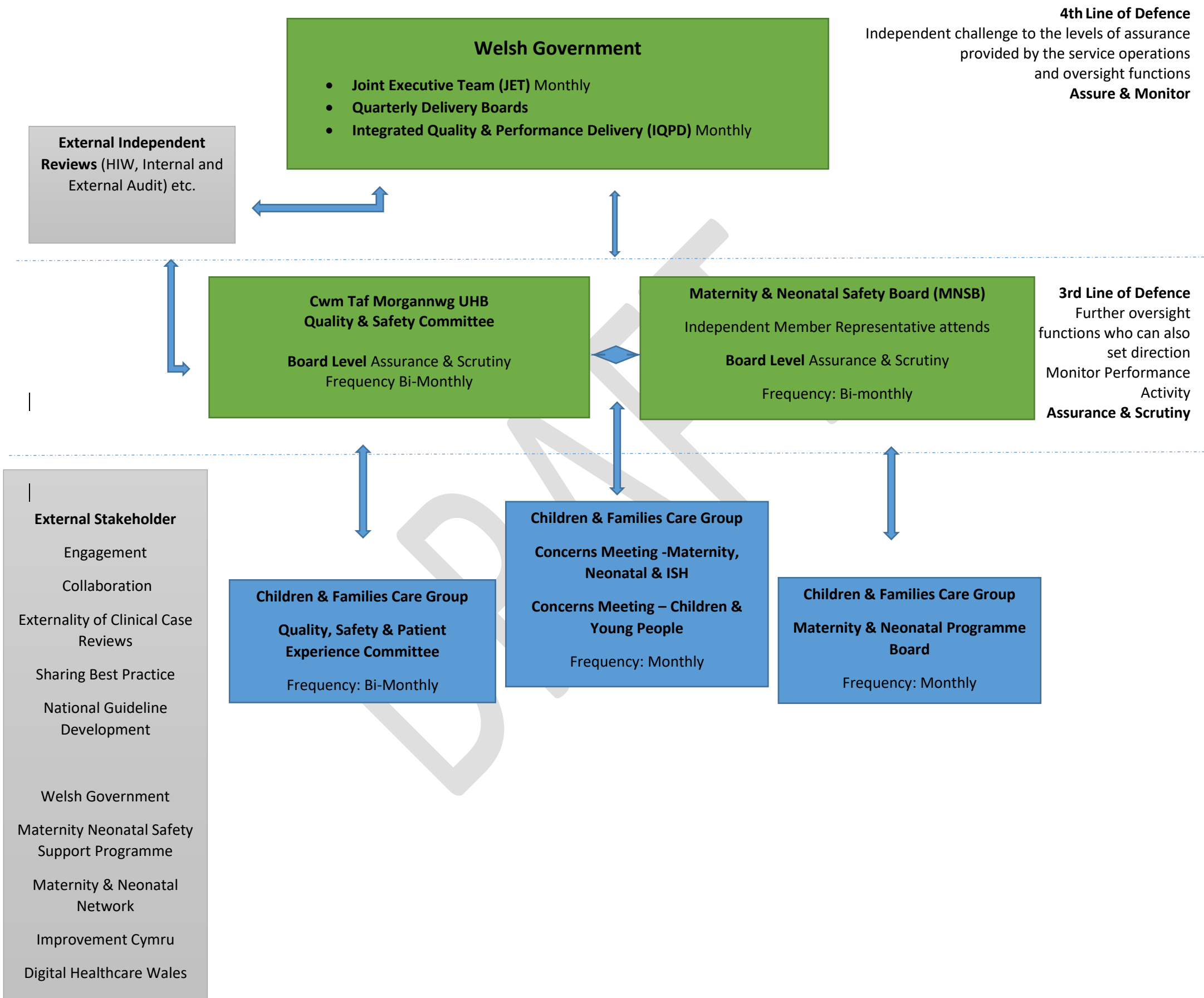
APPENDIX 1

MATERNITY & NEONATES ASSURANCE, RISK & ESCALATION FRAMEWORK FINAL

DECEMBER 2022 V5.0

CHILDREN & FAMILIES CARE GROUP MODEL

The following structure outlines the “Floor to Board” Escalation, however, it is important to note that there is two way communication which flows from Board to Floor. The Assurance Framework also outlines how it aligns to a ‘Four’ Lines of Defence Model including assurance framework for monitoring Conditions of Sustainability & Milestone Plan post IMSOP & once the Maternity Improvement Programme arrangements have ended.



Points to Note / Reference Documentation

Terms of Reference for all service meetings are available upon request from estelle.bish@wales.nhs.uk and are located in the Maternity Fileshare.

All Meetings have minutes and action logs. Exception Reports inform Service Group QSPE meetings.

Should risks or concerns be identified then the process adopted will be in accordance with the relevant Health Board Policies and Procedures.

2nd Line of Defence
 Care Group oversight functions who set direction, monitor performance and activity

Assurance & Scrutiny

1st Line of Defence

Service ('Floor') Level Operational Activity
 Quality & Performance monitored on a day-to-day basis

Business as Usual Activity

Teams and Processes

Self-Assurance & creating a culture that supports psychological safety for colleagues

