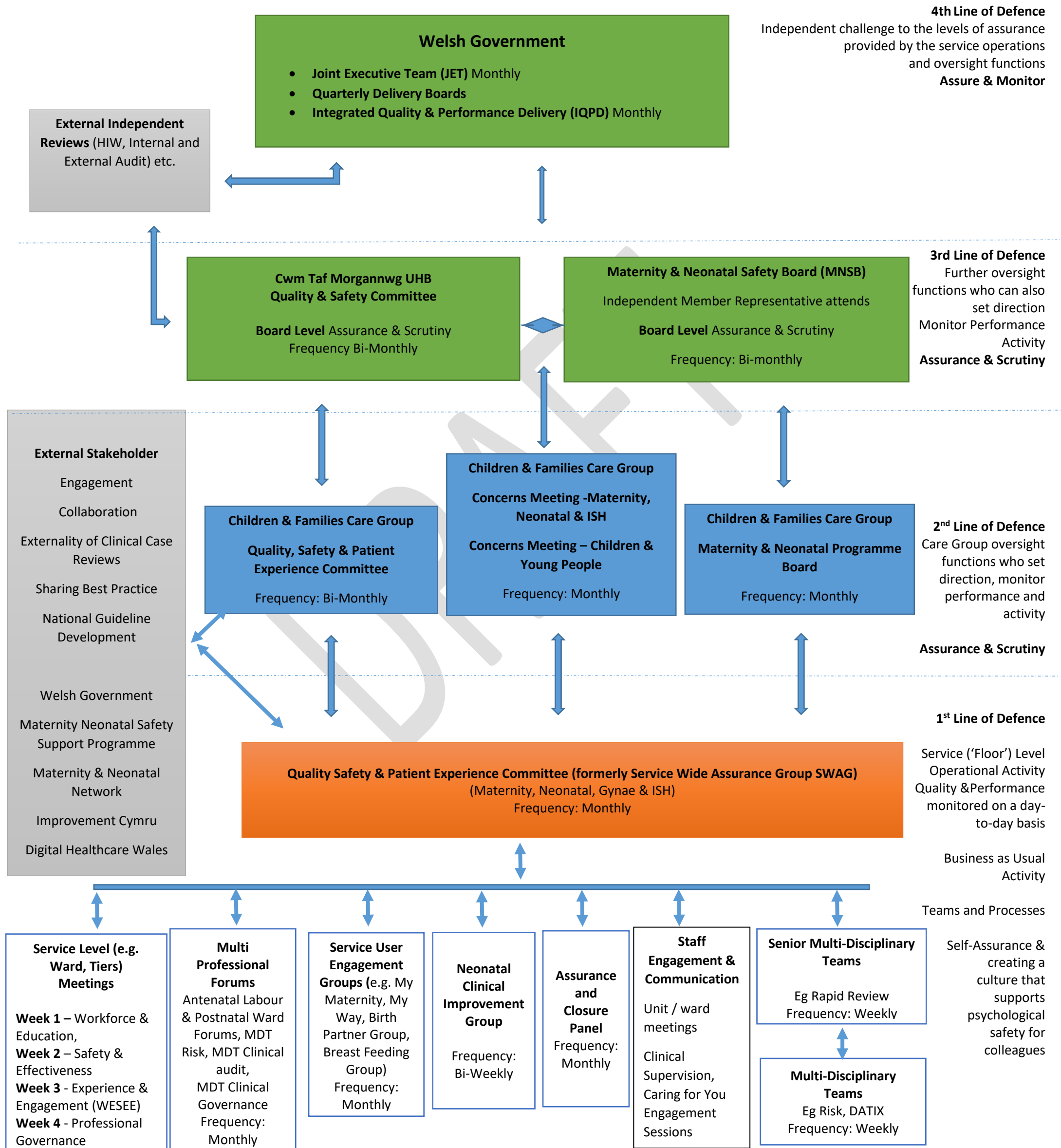


MATERNITY & NEONATES ASSURANCE, RISK & ESCALATION FRAMEWORK

APRIL 2023 2022 V7.0

CHILDREN & FAMILIES CARE GROUP

The following structure outlines the “Floor to Board” Escalation, with two way communication which also flow from Board to Floor. The Framework aligns to a ‘Four’ Lines of Defence Model and has been updated to reflect The Duty of Quality Statutory Guidance and Quality Standards (Welsh Government 2023).



Points to Note / Reference Documentation

Terms of Reference for all service meetings are available upon request and are located in the Maternity “Fileshare”. All Meetings have minutes and action logs. Exception Reports inform Service and Care Group QSPE meetings. Should risks or concerns be identified then the process adopted will be in accordance with the relevant Health Board Policies and Procedures. This Framework is underpinned by CTM Quality Strategy (2022-2025) and Quality and Patient Safety Governance Framework which defines responsibilities at service level through to the Executive Level.

DRAFT