

CTM 2030
**Ein Hiechyd
Ein Dyfodol**
DATBLYGU CYMUNEDAU
IACHACH GYDA'N GILYDD



CTM 2030
**Our Health
Our Future**
BUILDING HEALTHIER
COMMUNITIES TOGETHER

CWM TAF MORGANNWG UHB

University Health Board Designation Status Review

**MAE EIN
GWERHOEDD
YN EIN HELPU
NI I FOD AR
EIN GORAU**

**OUR VALUES
HELP US BE AT
OUR BEST**

**RYDYN NI'N
GWRANDO,
YN DYSGU
AC YN GWELLA**



**WE LISTEN,
LEARN AND
IMPROVE**

**RYDYN NI'N
TRIN PAWB
A PHARCH**



**WE TREAT
EVERYONE
WITH RESPECT**

**RYDYN NI I GYD
YN CYDWEITHIO
FEL UN TÎM**



**WE ALL WORK
TOGETHER
AS ONE TEAM**

Mid year Update 2022



INTRODUCTION

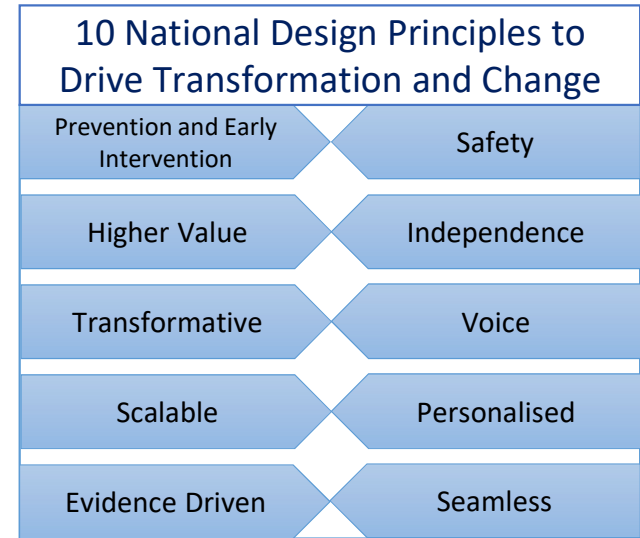


Mission Building Healthier Communities Together

Our strategy aims to set out how we develop the services that we provide to meet the needs of our population as we look to 2030 and beyond, and how we can work with our communities to ensure that local people can live happier and healthier lives for as long as possible.

In Cwm Taf Morgannwg, we want to make a real shift towards focusing on promoting health in our communities, by that we mean preventing ill health from happening rather than treating people when they get sick, whilst ensuring that we are able to provide the best care possible when people need our support.

- “CTM is creating healthy communities through a focus on prevention and high quality care delivered by highly motivated staff working in an organisation where sustainable practices and a commitment to learning are emphasised.
- University Designation gives us a framework for this pursuit
- Three ‘golden threads’ link our operations or activities as an organisation to this overarching pursuit:
 - Communities
 - Collaboration, and
 - Creativity
- Across Research & Development, Training & Education and Innovation, specific activities and ambitions will evidence these guiding principles”.



Llywodraeth Cymru
 Welsh Government



GOLDEN THREADS OF UNIVERSITY DESIGNATION



Bwrdd Iechyd Prifysgol
 Cwm Taf Morgannwg
 University Health Board



ENABLES

CTM 2030
**Our Health
 Our Future**
 BUILDING HEALTHIER
 COMMUNITIES TOGETHER

CTM 2030
**Ein Hiechyd
 Ein Dyfodol**
 DATBLYGU CYMUNEDAU
 IACHACH GYDA'N GILYDD

Reducing health inequalities
 Equal focus on mental and physical health
 Supporting our communities
 Being a healthy organisation

Visible and inspiring leadership
 Promoting diversity and inclusion
 Embedding our values and behaviours
 Encouraging local employment

**WE LISTEN
 LEARN AND
 IMPROVE**

**WE TREAT
 EVERYONE
 WITH RESPECT**

**WE ALL WORK
 TOGETHER
 AS ONE TEAM**

CREATING HEALTH

INSPIRING PEOPLE

SUSTAINING OUR FUTURE

IMPROVING CARE

Building Healthier Communities Together

Delivering safe and compassionate care
 Developing new models of care
 Digital transformation for patients and staff
 Ensuring timely access to care

Becoming a green organisation
 Ensuring our services' financial sustainability
 Embedding value-based healthcare
 Ensuring our estate is fit for the future

← **Our Peoples
 Creativity**

← **Our Vision
 Delivered in
 Collaboration**

Supporting



'Citizen Led'
 Driven by our communities with
 opportunities to be involved

← **Our
 Communities**





UNIVERSITY HEALTH BOARD UNDERPINNING ACTIVITY



Research and Development

- Successful delivery of a Covid-19 vaccine (bi-valent) trial, in collaboration with Moderna, HCRW & PHW - 50 participants recruited, only site in Wales
- Working with Clinical Education in progressing placement of student nurses within R&D, in collaboration with USW
- Continue to submit joint funding applications (KESS, RCBC, RfPPB) and increase access to the Clinical Research Centre for all research partners
- Successful bids for external funding: e.g. RfPPB with Cardiff University, and NHS Research Time Award to develop collaboration with Cardiff /Oxford Universities
- Re-established the multi-disciplinary, multi-professional, multi-organisational R&D Conference, hosted by CTMUHB: November 23rd 2022
- Promoting research: presentations at academic and healthcare professionals national events e.g. Stroke Hub Wales Research and Innovation Conference, and 'All Wales' Conference: A Healthier Wales
- Total recruits for CRP and commercial studies Apr 21 to Aug 22 = 2987

Training and Education

- 6000 medical student placement weeks
- Over 10,000 nursing student placement weeks
- 1660 AHP student placement weeks
- Education MOU's with 6 HEI partners
- Appointed Wales first Multi-professional Practice Education Facilitator
- Advanced practice and CPD qualifications accessed with HEI partners
- WIDI funded project to create Digital Simulation strategy for Clinical Education
- Establishing Inter-professional learning infrastructure to support clinical placements.
- Joint working with Pharmacy to establish training model to deliver new undergraduate clinical placements
- Partnership working with HEI's in Student Leadership Development.

Innovation

- Seeking continuation of UK Government Community Renewal Funding with WIDI
- Establishing a Centre of Digital and Physical Engineering to support rapid prototyping and manufacture
- Leading on Anchor Institution status and foundational economy support accessing areas of HEI expertise
- Growing commercialisation strategy and impact with coherent IP policy and spin out/not for profit approach partnerships with HEIs
- Increase: Joint publications; Funding applications; External Income; Joint appointments and honorary posts





UNIVERSITY HEALTH BOARD ENABLING ACTIVITY



Digital

- Working with Universities to develop our data science capabilities and other capacity gaps (i.e. Cyber Security)
- Exploring digital apprenticeships with University of South Wales & University of Wales Trinity St David
- 5 members of staff on the first Intensive Learning Academy MSc for Digital Leadership
- Internal quarterly Action Learning Set for participants in MSc Digital Skills for Healthcare Professionals.
- Exploring partnerships for digital transformation supported by academic evaluation

People

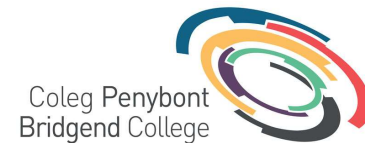
- July 2022 we launch our strategic partnership for professional studies with the University of South Wales
- Apprenticeship Academy to create a pro Apprenticeship culture. Modern apprenticeships, staff can access qualifications, some 673 staff have accessed so far
- Traditional Apprenticeships providing on the job training, we have successfully filled two apprentice placements with a further 10 expected to be filled during the financial year
- We have created 27 Kickstart work placement opportunities for younger people to gain valuable experience
- Project Search (Engage to Change) offers internships to those with a learning disability and/or Autistic Spectrum Disorder, 12 interns placed
- Aligning with our Population Health agenda and corporate goals of creating health and sustaining our future, we have developed our Youth Engagement Plan
- USW to accredit our internal leadership programme



**Academiau Dysgu
 Dwys Cymru**
 Intensive Learning
 Academies Wales



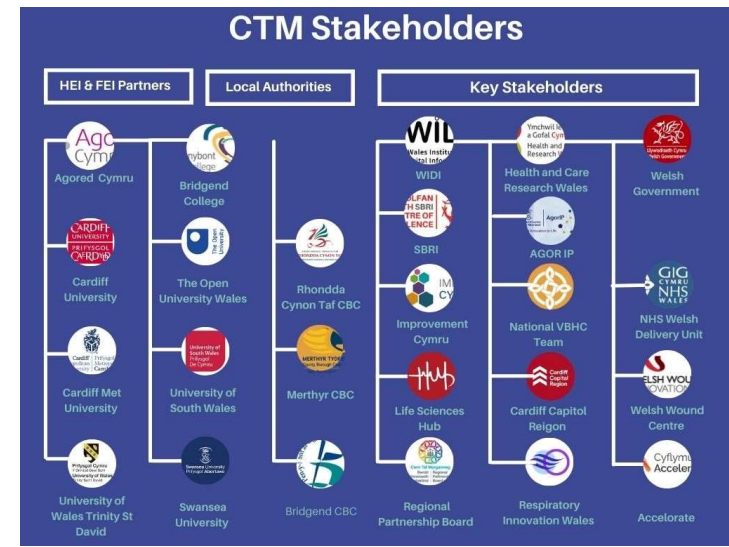
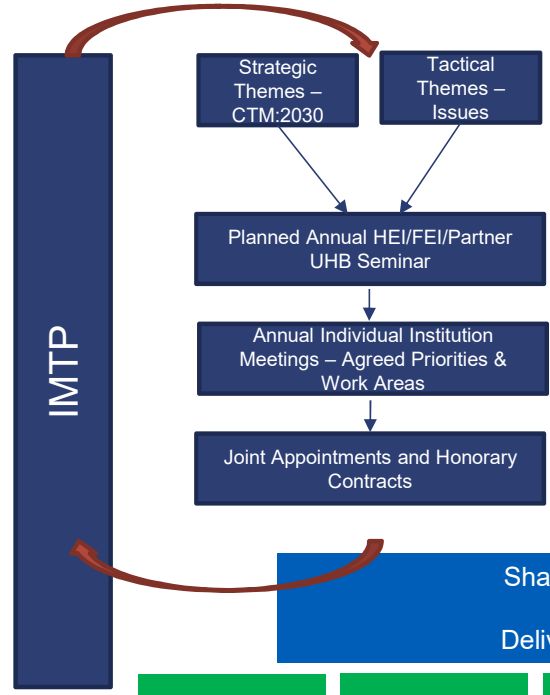
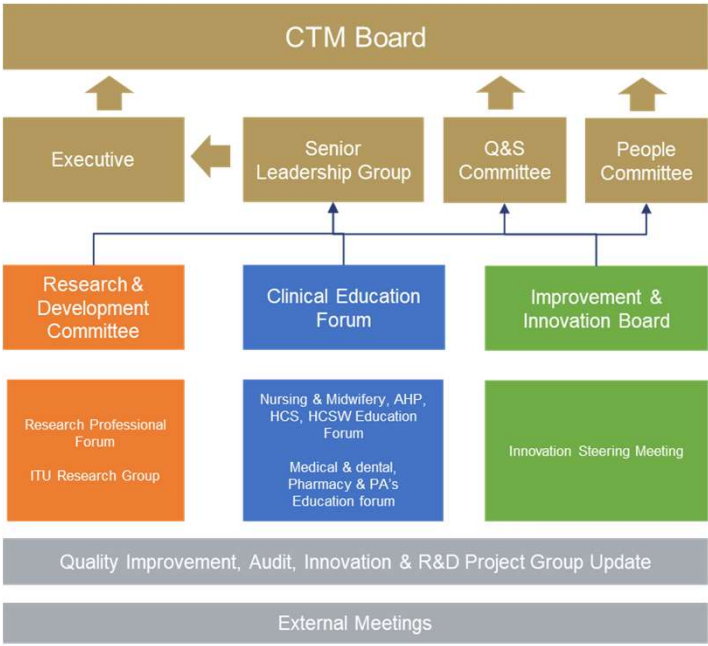
Prifysgol Cymru
 Y Drindod Dewi Sant
University of Wales
 Trinity Saint David



**Cardiff
 Metropolitan
 University** | **Prifysgol
 Metropolitan
 Caerdydd**



ENGAGEMENT AND GOVERNANCE



Shared Values, Aims and Objectives
 Challenge Based Learning
 Delivering Corporate Responsibilities

- Evidence and Value Based approach to improved Clinical & Social Care Services and Population Health with Impact
- Maximise Collaboration through Shared resources and Expertise of all Partners and Population
- Improved Communication and Networks within and between Partners
- Optimise Commercial opportunities, Re-investment and Sustainability of all partners
- Workforce development and Career opportunities for all partners
- Multi-Professional, Multi-Disciplinary, Multi-Agency and Full Inclusion