



**AGENDA ITEM**

5.1

**POPULATION HEALTH & PARTNERSHIPS COMMITTEE**

**PRIMARY CARE STRATEGIC AREA DEVELOPMENT -  
ACCELERATED CLUSTER DEVELOPMENT TIMELINE**

<b>Date of meeting</b>	04/05/2022
<b>FOI Status</b>	Open/Public
<b>If closed please indicate reason</b>	Not Applicable - Public Report
<b>Prepared by</b>	Lesley Woakes, Deputy Director of Planning (Primary Care)
<b>Presented by</b>	Julie Denley, Director of Primary Care and Mental Health
<b>Approving Executive Sponsor</b>	Chief Operating Officer (COO, DPCMH)
<b>Report purpose</b>	ENDORSE FOR COMMITTEE APPROVAL

**Engagement (internal/external) undertaken to date (including receipt/consideration at Committee/group)**

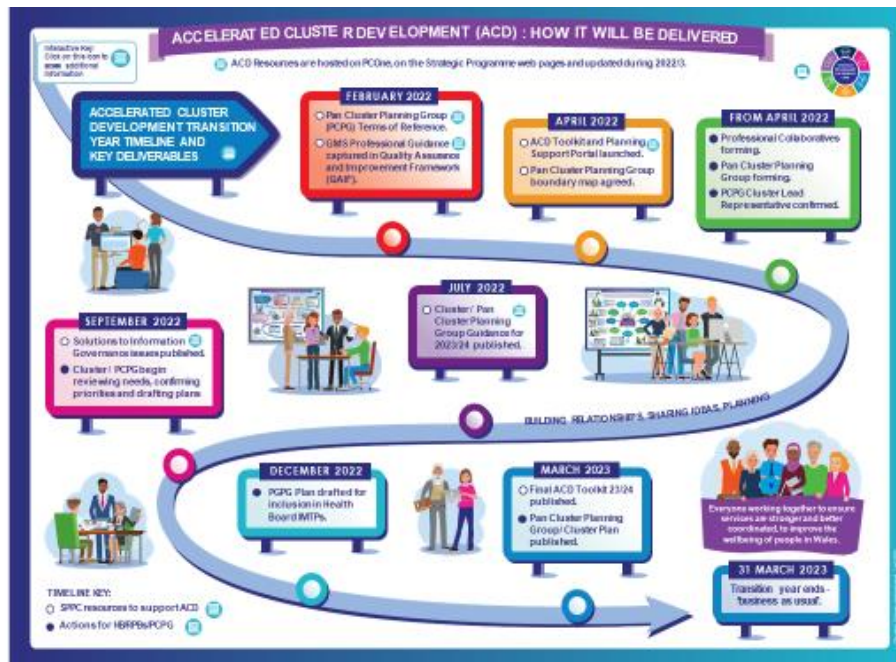
<b>Committee/Group/Individuals</b>	<b>Date</b>	<b>Outcome</b>
	(DD/MM/YYYY)	Choose an item.

**ACRONYMS**

ACD	Accelerated Cluster Development
CTMUHB/LHB	Cwm Taf Morgannwg University Health Board/ Local Health Board
PCPG	Pan Cluster Planning Group
RPB	Regional Partnership Board
SPPC	Strategic Programme for Primary Care
ToR	Terms of Reference

## 1. SITUATION/BACKGROUND

- 1.1 The formation of GP clusters has a long history informed by national policy. ACD is seen by Welsh Government as being the next step in building on the achievements of GP clusters, recognising the importance of providing services informed by Population Health data on a place based community approach through working collaboratively:
- Setting the Direction (2010)
  - Primary Care Plan for Wales (2015 -2018)
  - A Healthier Wales (June 2018)
  - Strategic Programme for Primary Care (SPPC) (November 2018)
- 1.2 In CTMUHB, there are eight clusters currently across three Integrated Locality Group areas which are not co-terminous with Local Authority boundaries.
- 1.3 In order to fully implement ACD and ensure that all health and social care partners can work on a place based footprint, as part of a proposed operating structure change CTMUHB has included is to align of services to the three LA areas.
- 1.4 The key milestones for the SPPC programme in 2022/23 which is described as a transition year are:
- April – June 2022**
- LHBS to convene Pan cluster planning groups (PCPG) at county level, aligning to Local Authority boundaries
  - Implement Professional Collaboratives
- July 2022**
- Guidance on Professional Collaboratives and PCPGs will be published
- March 2023**
- Each PCPG will submit an annual plan
- 1.5 SPPC has developed a toolkit for implementation of ACD and provided the infographic below, identifying the key actions for Health Boards and for the SPPC :



A full set of resources including model Terms of Reference for Plan Cluster Planning Groups and Professional Collaborative can be found at:

[Accelerated Cluster Development Toolkit - Primary Care One \(nhs.wales\)](https://www.nhs.uk/accelerated-cluster-development-toolkit-primary-care-one)

## 2. SPECIFIC MATTERS FOR CONSIDERATION BY THIS MEETING (ASSESSMENT)

- 2.1 An Action Plan for achieving the milestones as set by SPPC is being developed by the ACD Programme Board, which has broad representation across Health and Social Care and is co-chaired by the directors of Strategy and Transformation and Primary Care and Mental Health.
- 2.2 The emerging action plan from the ACD Programme Board covers the following areas:

Action	What	When	RAG
Engagement	Roadshow in each LA area with participants from health and social care services	May/June 22	A
	Q&A sessions with GP clusters	Ongoing	G
	Q&A sessions Dental, Pharmacy and Optometry colleagues	May/June 2022	R



ACD Programme Board review draft ToR	Model ToR for PCPG, Clusters and Professional Collaboratives reviewed and agreed	May 2022	A
	Relationship of PCPG to the RPB fully articulated within the ToR		A
Implementation of PCPG/Clusters/ Professional Collaboratives	Informed by engagement events, led by the ACD Programme Board	June 2022	A
Governance	Assurance to the LHB and alignment to existing structures	May 2022	A
	Budgetary control if delegating budgets to PCPGs- SPPC scoping options but one could be an All Wales Model of delegation	TBC	R
Administrative support to PCPG, Clusters and Professional Collaboratives	Options being scoped within existing portfolios	June 2022	A
Funding flows identified for participation in Professional Collaboratives	GMS contract and Pharmacy Contract include funding for participation in Professional Collaboratives. Dental and Optometry contractors are not required currently to participate. Currently a pilot for Optometry in CTM.	June 2022	A

### 3. KEY RISKS/MATTERS FOR ESCALATION TO BOARD/COMMITTEE

- 3.1 The work to achieve PCPG has commenced and is set to be achieved by June 22 recognising there will be a longer lead in time for them to mature inline with expectations.

- 3.2 Implementation of each of the PCPG, Cluster and Professional Collaboratives across three LA areas will require a significant change/engagement process and ongoing administration resource to facilitate.
- 3.3 A number of key resources to be provided by the national team which will support the LHB to put in appropriate governance, are yet to be determined.

#### 4. IMPACT ASSESSMENT

<b>Quality/Safety/Patient Experience implications</b>	There are no specific quality and safety implications related to the activity outlined in this report.
<b>Related Health and Care standard(s)</b>	Governance, Leadership and Accountability If more than one Healthcare Standard applies please list below:
<b>Equality Impact Assessment (EIA) completed - Please note EIAs are required for <u>all</u> new, changed or withdrawn policies and services.</b>	No (Include further detail below)  If yes, please provide a hyperlink to the location of the completed EIA or who it would be available from in the box below.  If no, please provide reasons why an EIA was not considered to be required in the box below.  This will be developed by the ACD Programme Board and is identified in its work programme
<b>Legal implications / impact</b>	There are no specific legal implications related to the activity outlined in this report.
<b>Resource (Capital/Revenue £/Workforce) implications / Impact</b>	Yes (Include further detail below) This is being scoped as detailed in the body of the report
<b>Link to Strategic Goals</b>	Sustaining Our Future

#### 5. RECOMMENDATION

- 5.1 The Committee is asked to **ENDORSE** the direction of travel identified in this report and accept the draft action plan which is being put in place to meet the ACD implementation timeline.