

CTM 2030
**Ein Hiechyd
Ein Dyfodol**
DATBLYGU CYMUNEDAU
IACHACH GYDA'N GILYDD



CTM 2030
**Our Health
Our Future**
BUILDING HEALTHIER
COMMUNITIES TOGETHER

Escalation: Assurance Process and Governance.



**CREATING
HEALTH**



**SUSTAINING
OUR FUTURE**



**IMPROVING
CARE**

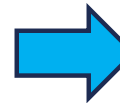


**INSPIRING
PEOPLE**



Background ...

- ❑ **Maternity and Neonatal** – significant progress made and a focus on sustaining improvements across both Maternity and Neonatal services.
- ❑ **Quality and Governance, Leadership and Culture, Trust and Confidence** – Considerable progress made but keen to see how the new operating model is embedded across the Organisation.
- ❑ **Quality related to performance and long waiting times** – Performance areas in both planned care and urgent and emergency care remains challenging with lengthy waiting lists.
- ❑ **Enhanced Monitoring for Planning and Finance** – The Health Board has been unable to produce an approvable and balanced three-year financial plan.



CTMUHB Targeted Intervention & Enhanced Monitoring Plan

An overarching governance roadmap outlining key meetings, activities and milestones supporting our TI and EM ambition

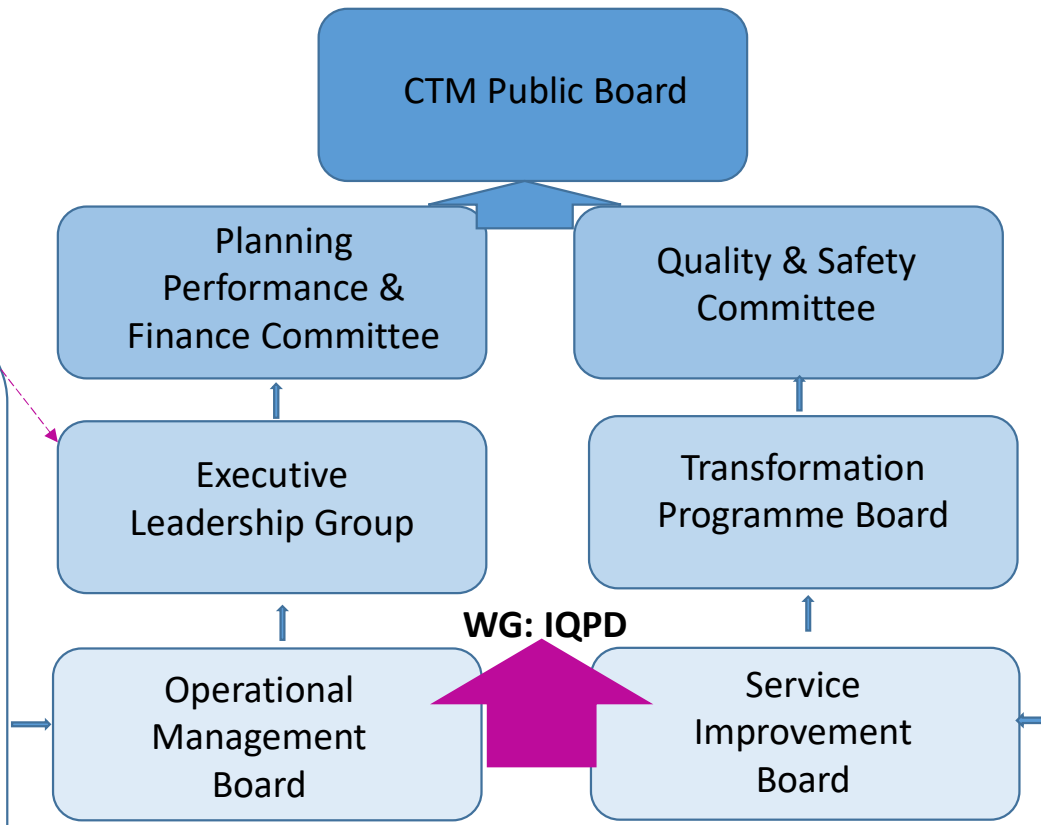
Improvement areas	2023												
	January	February	March	April	May	June	July	August	September	October	November	December	
CTMUHB Public Board													Approval and sign-off for current TI & EM status (Test options for using Board briefings as a scrutiny/challenge sessions by the wider board) - see meeting schedule
WG Meetings and External Reviews (IQPD, Escalation & Jet). Monthly WG mtgs - PCR/Cancer/6 Goals/1000 Bed community capacity													<p>Joint review and confirmed status (9 Feb - 3-5pm / 20 April - 3 - 5pm / 18 July - 3- 5pm / 19 October 3-5pm). DU Review Dates for Mat & Neonatal TBC.</p> <p>Joint WG & CTM scrutiny and challenge session (18 January 11a 3/ 14 February 11 to 2.30 / 16 March 9.30 to 11/ 11 April 11 to 1pm / no meeting due to JETs / 9 June 09.30-12.00 / 7 July 09.30-12.00 / 18 August 09.30-12.00 / 15 Sept 10.00 - 12.00 / 10 Oct 1.30 - 3.30 / 6th Nov 2 - 4). JET: 10 May 3-5pm and 8th November 3-5pm. Monthly mtgs with WG for PCR / Cancer / 6 Goals / 1000 bed community capacity</p>
CTMUHB Committees													Highlight reports and specific updates to relevant committees (prior to board) - see meeting schedule
Transformation Programme Board / Strategic Leadership Group													view and updates on specific projects which feed into committee updates - see meeting
Internal CTMUHB Mtgs Operational Management Board / Improvement Care Board / Maternity and Neonatal Board													Operational Management Board - Operational Meetings with each Care Group / Improving Care Board - Improvement Work / M&N Board => feeding into TPB/SLG and Committees - CMB and ICB mtg dates

WG: Quarterly Escalation Meetings

A forum for sharing information and communication of operational matters across the Care Groups and corporate Departments. To monitor key performance metrics and to discuss and approve business cases, service changes, proposals and similar documents prior to onward progression through the UHB.

A number of groups will report to the Board, including:

- Operational Capital Group
- H&S and Fire Group
- Local Partnership Group
- QSR Care Group Committee CG Papers



A forum for the sharing of information and communication of improving care issues across the Care Groups and corporate Departments within the Health Board, to monitor Improvement projects, service changes, proposals and similar documents prior to onward progression through the UHB.

A number of groups will report to the Board, including:

- Six Goals Programme
- Cancer Board
- Digital and Data Update
- PC and Community Transformation Programme
- Mental Health & Learning Disability Transformation Programme
- Improving Care Dashboards

This structure is in its early days and it is likely that there will be changes and adaptations needed as the new Care Group structure develops and beds in.



- TORs and TI/EM framework agreed with WG
- Agreed scope, perimeters and the de-escalation criteria
- In discussion about areas of support with WG i.e. DU, NHS Exec - Planned Care Improvement and Recovery Team
- Key Performance Indicators (KPIs) agreed with recovery trajectories for
 - Planned Care
 - Unscheduled Care
 - Cancer
 - Mental Health
 - Neurodevelopmental
- Confirmed SRO and IM for each area in escalation
- IMTP submitted on the 31 March 2023 (as agreed with the Board)
- Phase 2 of the new Care Group Model underway