

CTM Digital and Data Committee

Paul Howells – Programme Lead (NDR)

Liam Morrissey – CTM Senior Product Specialist (NDR)

15 December 2020

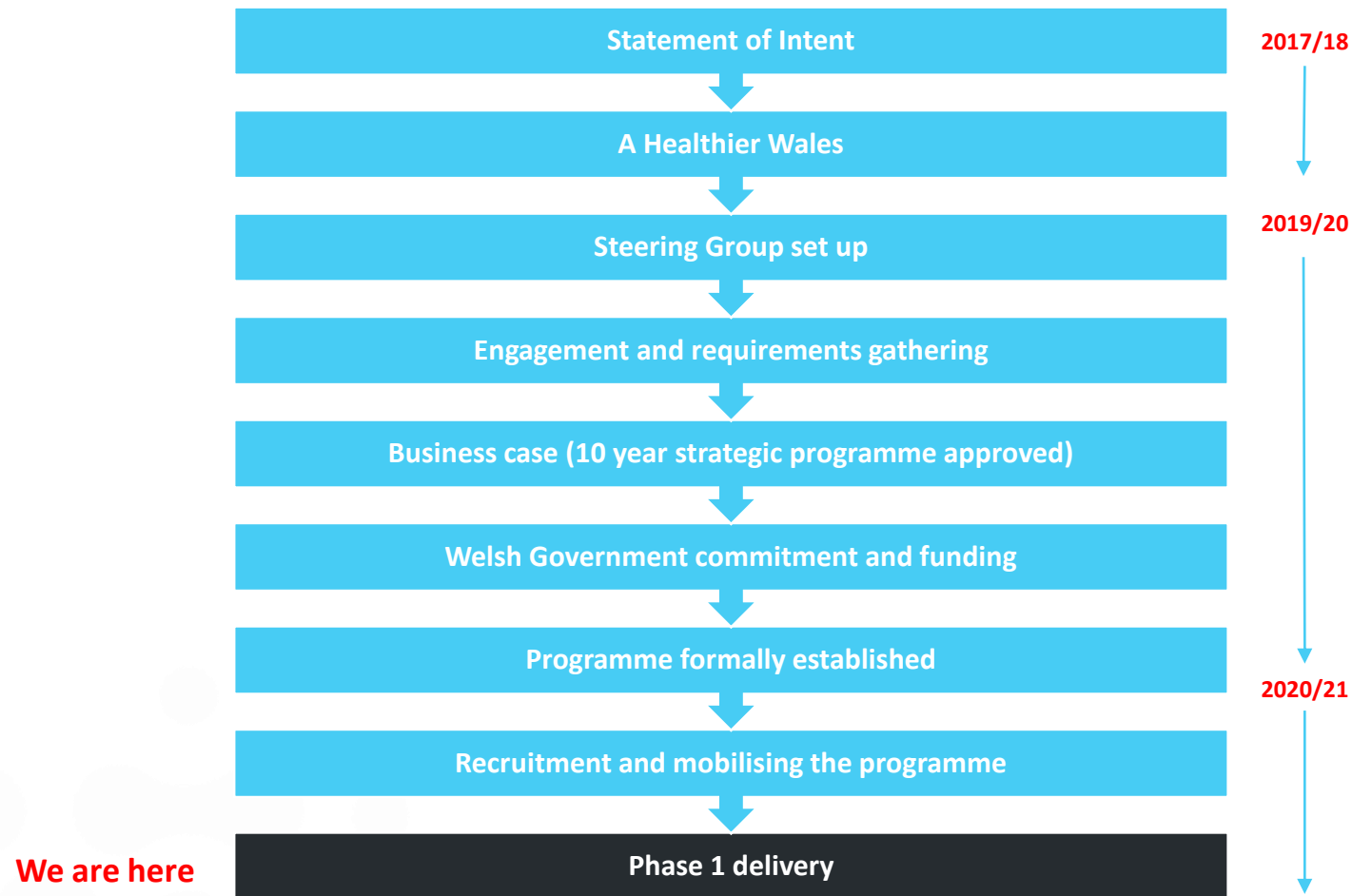
Journey to an approved programme in 2020/21

“The NDR is an essential investment - it will deliver long term benefits of at least £195m with expected full life costs of £57m”

Benefits have been assured by external experts

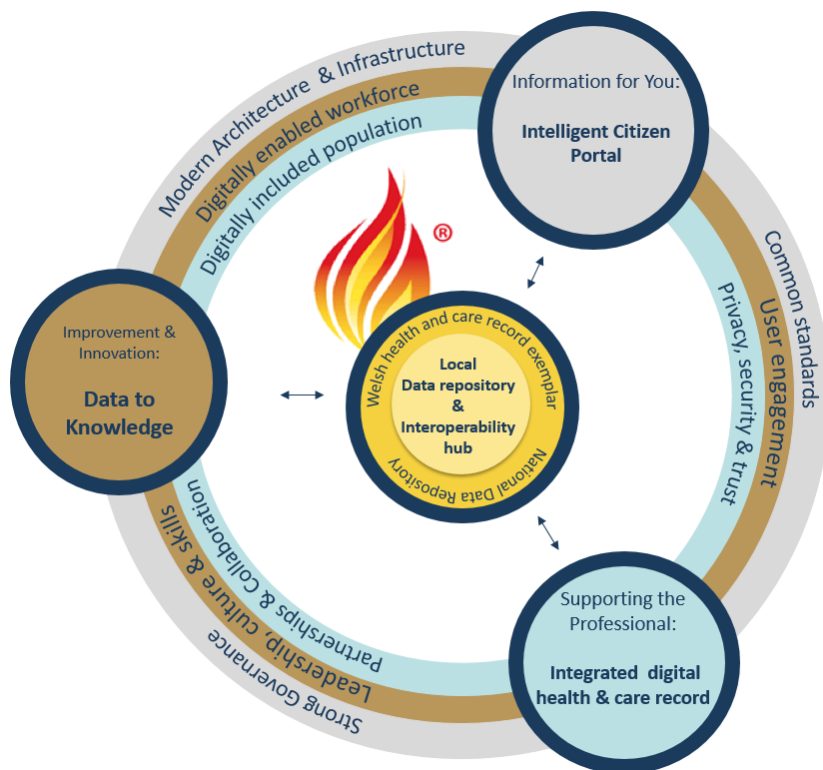
“...Welsh Government are supporting this and investing in the National Data Resource.”

Vaughan Gething, Minister, April 2019



PROGRAMME OVERVIEW

- ❖ Data driven decision making
- ❖ Business-aligned intelligence
- ❖ Turn insight into ACTION



Why we exist

- A strategic imperative for Wales
- Underpins commitments in A Healthier Wales
- Essential to the Digital Architecture Review
- A joined up approach to health and care data

Benefits

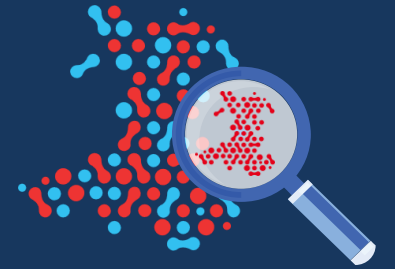
- Improving management of chronic disease jointly between GPs and hospitals
- Linking clinical and Quality of Life outcome data to determine best treatment
- Developing routine review of costs and outcomes to support Value-Based Healthcare
- Enabling future service planning by analysis of regional health and care needs
- Providing data to drive more efficient, innovative and productive health and care

Delivery approach

- Open digital architecture
- Standards-based interoperability
- Federated data exchange and storage
- Access to data for insights, analytics and apps

Risks and dependencies

- COVID-19 and other priorities
- Information governance
- Capacity and capability
- Data quality



KEY OUTPUTS OF THIS YEAR SO FAR

Achievements



Test, Track and Protect system

Single Cancer Pathway data platform

National Terminology Service (SNOMED CT)

Social care data strategy for Wales

Roadmap: national architecture / interoperability

NDR team (35 staff across all organisations)

E-research and Data Collaboration Platform

Value-based Healthcare and PLICS products

Wales Networked Data Lab

National Analytics Learning Programme

NHS Wales Developer Portal

KEY ONWARD OUTPUTS

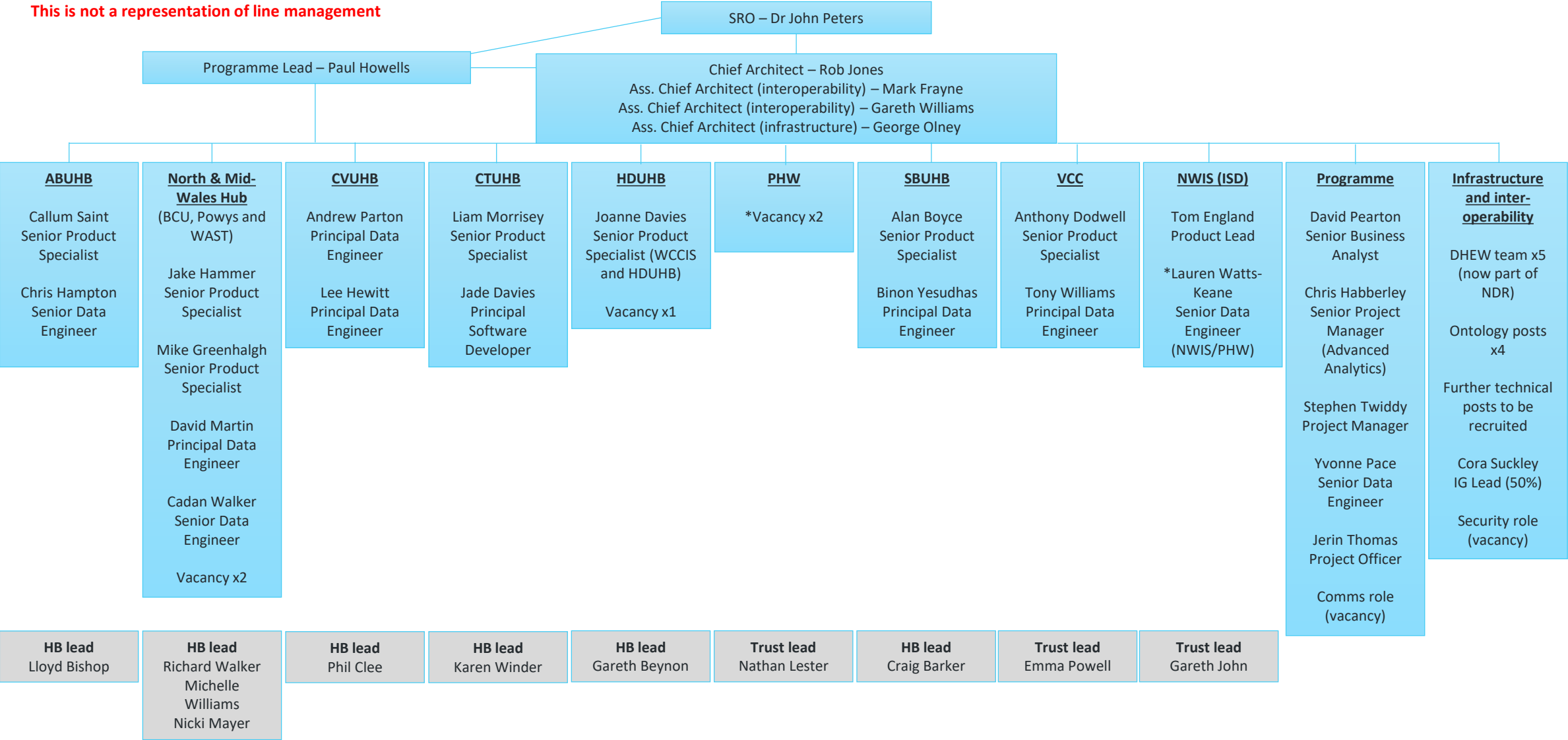
High-level overview of the rest of this and year and into next year



- National data store
- Secure access to linked patient data
- API management
- Interoperability standards
- Migration to open architecture
- Semi-automating audit / registries
- Big data and advanced analytics maturity
- Research and innovation
- Phase 2 business case

NDR team

This is not a representation of line management



Cwm Taf Morgannwg NDR

CTM NDR work started earlier this year, 2 staff members in post

- NDR runs in parallel with all existing work, not instead of it
- Performance & Information and ICT committed to deliver on their IMTP's

CTM local priorities include:

- **Building a Local Data Repository (LDR) on new robust, scalable Infrastructure (databases, FHIR Server and a stream-processing platform)**
- **Access to Primary Care data for use cases such as**
 - Population Health Management using Population Segmentation and Risk Stratification
 - Demand and Capacity modelling
 - Shift Programme (enhancing health and wellbeing)
- Phase 1
 - Use existing API's to GP Systems to extract data to be ingested into the LDR
 - Combine this data with Secondary Care data to enable us to satisfy use cases
 - Information Governance already in place for work at a local level
 - We would hope to have Phase 1 completed by the end of the financial year.
- Phase 2
 - Introduce the use of FHIR (Fast Healthcare Interoperability Resources)
 - Create and consume bi-directional API's to allow this LDR data to be used
- **Cancer Pathway Management**
 - Combine data from various data sources to track cancer referrals/milestones
 - Single Cancer Pathway (automated data submissions) delivered already for CTM

Cwm Taf Morgannwg NDR

Benefits

- **Promoting closer working relationships between Health Boards, Trusts, NWIS, Social Care and the recently formed NDR central team.**
- **Federated working between all parties**
 - Access to national data rather than CTM Health Board only
 - Share ideas, datasets, code. Re-using what works well rather than doing things from scratch
 - Learn from one another based on past experiences
 - Save Time, Save Money, Deliver Faster and More Efficiently! Put simply, be more AGILE
- **NDR is a key dependency in our strategic vision of moving towards**
 - Clinical NLP and coding of unstructured data
 - Digital Transcription
 - Use of structured, semi-structured and unstructured data
 - Advanced Analytics

Wider NDR work of particular interest to CTM:

- UK data and technical standards
- Integrating PROMS data in to the NDR
- Setting up a modern big data capability for Welsh health and care
- Advanced Analytics Group for Wales (and Artificial Intelligence)

Summary and key messages

- The NDR is a key strategic objective for NWIS and Welsh Health and Care
- It covers the development of a new modern data ecosystem for Wales, and the delivery of key findings from the Digital Architecture Review
- The NDR will enable a whole system transformation and a stepped change towards a more data-driven system
- Our collaborative approach will support all organisations to improve their data and information capabilities
- **We would value your support to deliver this exciting programme, which has significant buy-in across Welsh Health and Care**

Thank you

liam.morrissey@wales.nhs.uk

paul.howells2@wales.nhs.uk

Internal use only - please contact Paul Howells if you want to share these slides

NDR partners:



Powered by

