

TEST, TRACE, PROTECT - COVID-19

CTM Perspective

Update to Board 29th October 2020

CTM Perspective: Weekly surveillance output

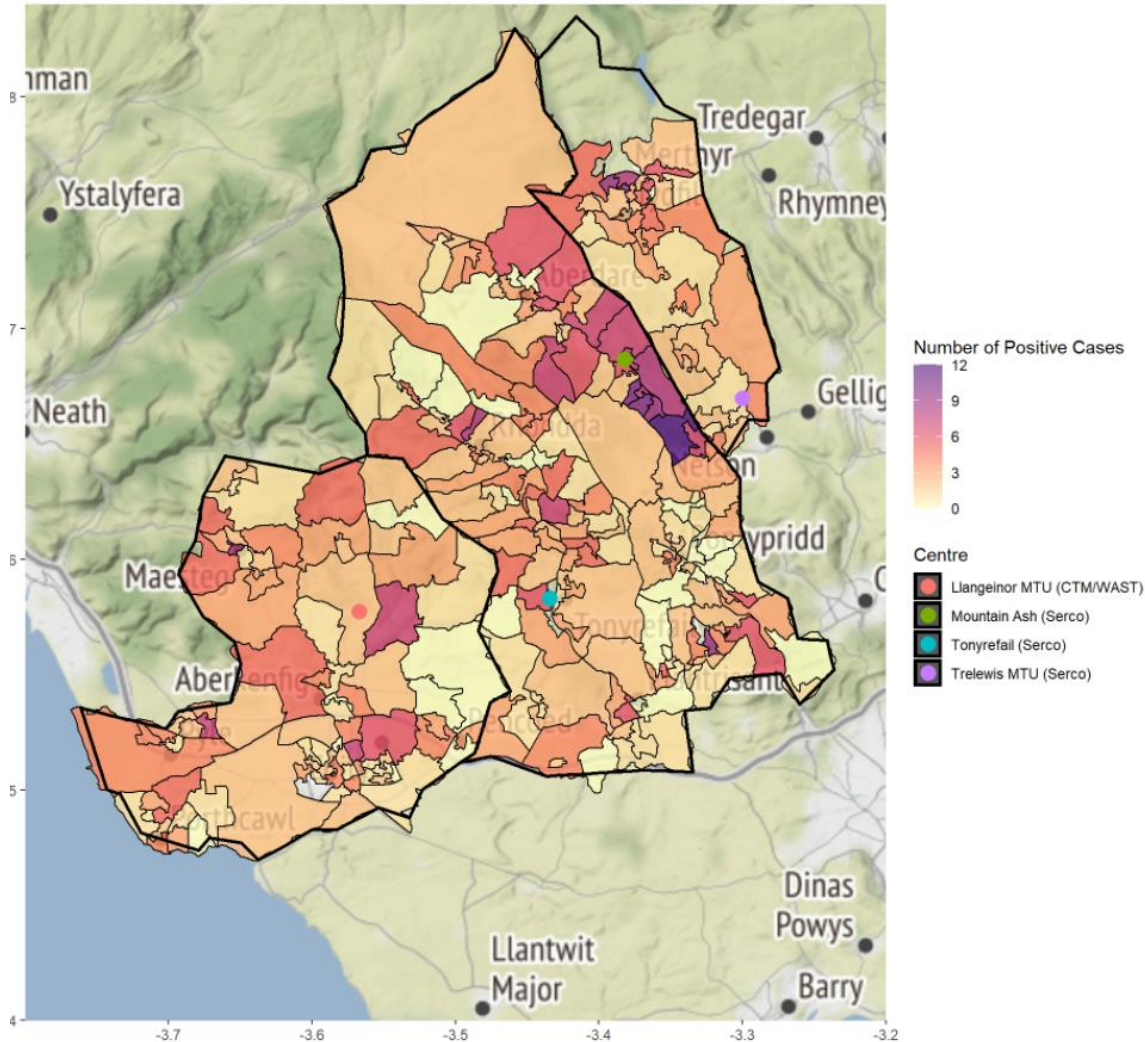
Weekly summary of Covid-19 surveillance indicators for CTM UHB, compiled by CTM PHT on 26/10/2020

No.	Indicators	This week (ending 24/10)	Last week (ending 17/10)	Summary/interpretation	Notes
Objective 1: Monitor intensity and severity of COVID-19 spread in CTM					
1a	Number of daily cases for CTM and LA residents	Increase	Increase	1,098 cases this week (244.7 cases per 100,000), Increase from last week (964). Rates by LA. BD – 199.9, MT – 271.9, RCT – 265.3	Number of new daily first positive cases.
1b	Positivity rate for CTM and LA	Increase	Increase	Positivity rates above 9% in CTM – highest in RCT (10%)	Positivity rates
1c	Number of COVID-related ICU admissions in CTM hospitals	Same	Increase	18 pts in ICU this week	This admission may not be for COVID-related symptoms. Admission may be a continuation of previously reported patient admission
1d	Number of weekly deaths Covid-19 by location (ONS) for LA and CTM residents	Increase	Increase	29 Covid-related deaths in latest week (12 last week) Highest since early May	Two week delay, any mention on the death certificate, date of occurrence
1e	Weekly excess deaths (Covid mentioned, Covid not mentioned) for CTM residents	Increase	Increase	Weekly deaths above 5-year average 14 excess deaths (24 Covid)	Two week delay, any mention on the death certificate, LA not available, date of registration
1f	Deaths in CTM hospitals (provider population)	Increase	Increase	23 increased from 16 last week.	COVID may not be the primary cause of death *Delays in data – could be higher
1g	Number of positive cases by LSOA/postcode	Increase	Decrease	10 LSOAs with more than 10 cases in last 7 days	Number of cases by LSOA/postcode to identify potential clusters
Objective 2: Monitor behaviour of COVID-19 in at-risk groups					
2a	Number of cases in key workers by group and non-key workers, CTM and LA residents	Increase	Increase	NHS 101, Care workers 82, Police 4, Education 29, Fire Service 4	First positive cases by key worker group e.g. NHS, care home, police, other. Using LIMS and CRM.
2b	Number tested in care homes with a positive result, CTM and LA residents	Increase	Increase	60 cases this week (52 last week)	Number of first positive cases
2c	Number of patients tested in the community with a positive result, CTM residents	Increase	Increase		*Numbers subject to change - may not be a true decrease
2d	Rate of weekly cases per 100,000 by deprivation fifth, in CTM residents	High	High	Higher rates in more deprived quintiles	Rates by Welsh Index of Multiple Deprivation Quintile
2e	Age-specific rates per 100,000 in CTM	High	High	Highest rates in those aged 40-49 Highest positivity in those aged 70-80	
2f	Number of weekly contacts identified	N/A	N/A	4,556 eligible contacts (88% followed up)	Data taken from CRM dashboard
Objective 3: Monitor immunity to COVID-19 in CTM					
3a	Proportion with antibodies by key worker group	N/A	N/A	NHS: 17.0%, Teachers: 6.0%, (Wales 14.3% and 5.1% resp.)	Data still to be validated
Objective 4: Detect outbreaks in hospitals and LTCFs					
4a	Number tested in care homes with a positive result, by specific care home	Increase	Decrease	7 care homes with more than one case (including staff)	Data validation needed to check LIMS coding.
4b	Number of prisoners with a positive result				Clarification of coding completeness needed
4c	Number of hospital infections by infection category by hospital (CAI, indeterminate, HAI)	Increase	Increase	154 admissions - HCAI 42, Probable HCAI 18, Indeterminate 17, CAI 40	Totals may include cases where it was not possible to calculate status. This is quite often due to the fact that these patients are not admitted to hospital and as such normally fall into the CAI

Key:	No additional attention needed	Some attention advised	Escalation and attention required
------	--------------------------------	------------------------	-----------------------------------

- Cases increased
- Positivity increased
- Multiple clusters of cases across CTM
 - Hospitals
 - Care Homes
 - HMP Parc

Built up areas



- Cases in built up areas across all local authorities
- 10 LSOAs with more than 10 cases, up from 7 LSOAs last week
- Mobile Testing Centres identified

Table 1. Breakdown of COVID-19 cases in Wales by Local Authority, as at 1pm 27/10/2020. Local Authorities within the health board highlighted in blue. Sorted by incidence over the last 7 days.

Local Authority	New cases	Cumulative cases	Last 7 days			Prior 7 days	
			Cases	Incidence*	Change**	Cases	Incidence*
Merthyr Tydfil	+67	1,652	294	487.4	↑ 195.7	176	291.7
Rhondda Cynon Taf	+276	5,890	1,107	458.8	↑ 186.9	656	271.9
CTM UHB	+427	9,698	1,769	394.3	↑ 138.2	1,149	256.1
Blaenau Gwent	+52	1,316	272	389.3	↑ 180.3	146	209.0
Cardiff	+170	6,957	1,197	326.2	↓ 6.6	1,221	332.8
Neath Port Talbot	+65	1,989	448	312.6	↑ 96.3	310	216.3
Swansea	+127	3,822	770	311.7	↑ 122.2	468	189.5
Caerphilly	+119	2,570	485	267.8	↑ 94.9	313	172.9
Bridgend	+84	2,156	368	250.3	↑ 34.7	317	215.6
WALES	+1351	43,970	7,082	224.6	↑ 55.5	5,331	169.1

Further increase in cases
(WG threshold 50 per 100,000)

Table 2. Breakdown of COVID-19 positivity in Wales by Local Authority, as at 1pm 27/10/2020. Local Authorities within the health board highlighted in blue. Sorted by positivity over the last 7 days.

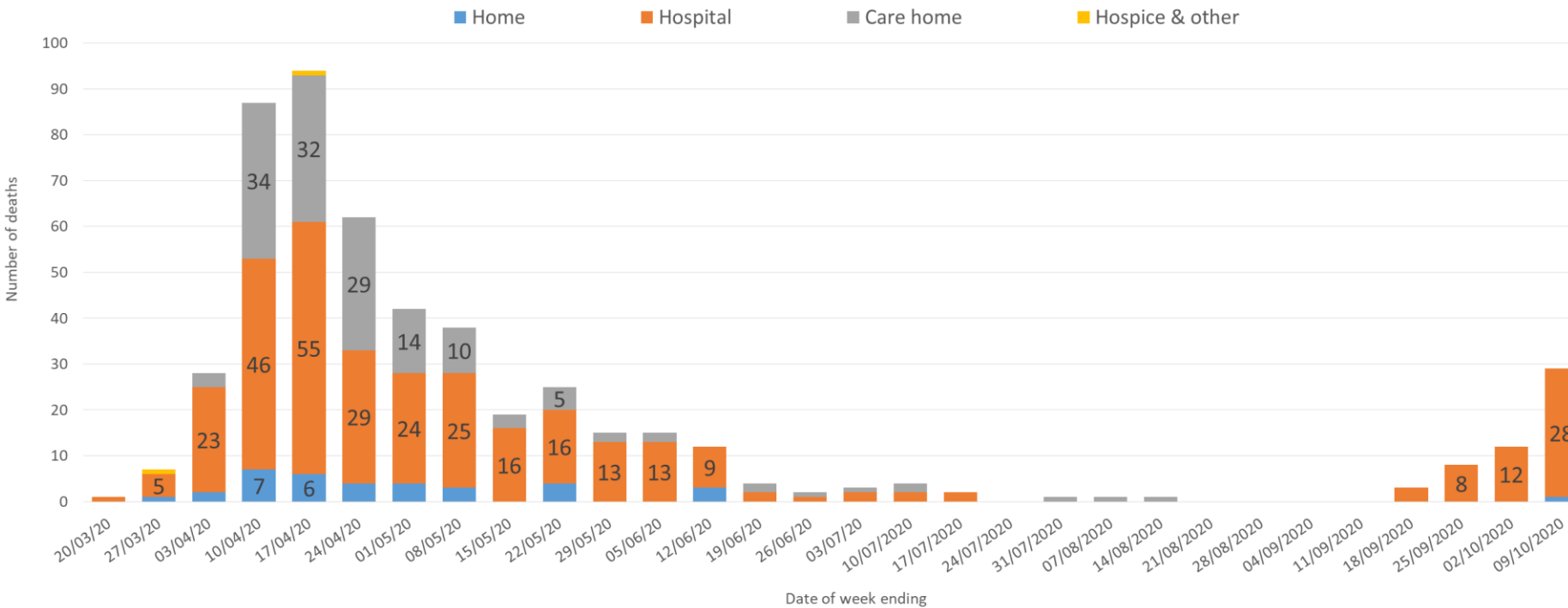
Local Authority	Last 7 days				Prior 7 days		
	Cases	Tests*	Positivity	Change	Cases	Tests*	Positivity
Rhondda Cynon Taf	1,107	4,732	23.4%	↑ 5.9%	656	3,745	17.5%
Merthyr Tydfil	294	1,306	22.5%	↑ 6.7%	176	1,114	15.8%
CTM UHB	1,769	8,180	21.6%	↑ 5.9%	1,149	7,304	15.7%
Swansea	770	3,859	20.0%	↑ 4.5%	468	3,019	15.5%
Cardiff	1,197	6,074	19.7%	↑ 1.5%	1,221	6,692	18.2%
Blaenau Gwent	272	1,469	18.5%	↑ 4.0%	146	1,010	14.5%
Outside Wales	423	2,359	17.9%	↑ 0.3%	473	2,681	17.6%
Neath Port Talbot	448	2,575	17.4%	↑ 2.7%	310	2,112	14.7%
Caerphilly	485	2,796	17.3%	↑ 3.5%	313	2,275	13.8%
Bridgend	368	2,142	17.2%	↑ 4.2%	317	2,445	13.0%
Unknown	75	461	16.3%	↑ 7.4%	41	463	8.9%
Torfaen	206	1,283	16.1%	↑ 7.1%	98	1,089	9.0%
WALES	7,082	45,423	15.6%	↑ 3.2%	5,331	42,962	12.4%

Further
increase in
Positivity
(WG threshold 5%)

ONS deaths

Weekly trends in COVID-19 deaths by location of death in CTM

Produced by CTMUHB PHT using ONS provisional weekly death occurrences



- 29 Covid deaths - highest since early May
- 28 hospital and 1 at home

COVID-19 Outbreak

Tuesday 27th October 2020 Media Statement

Royal Glamorgan Hospital

Linked COVID-19 cases – 160
Deaths in linked COVID-19 cases – 47
**numbers correct as of 26/10/2020*

Prince Charles Hospital

Linked COVID-19 cases- 69
Deaths in linked COVID-19 cases – 11
**numbers correct as of 26/10/2020*

Princess of Wales Hospital

Linked COVID-19 cases– 89
Deaths in linked COVID-19 cases – 11
**numbers correct as of 26/10/2020*

Ysbyty Cwm Rhondda

Linked COVID-19 cases– 26
Deaths in linked COVID-19 cases – (figure not subject to release due to small case numbers and impact on patient privacy)
**numbers correct as of 26/10/2020*

Maesteg Hospital

Linked COVID-19 cases – 22
Deaths in linked COVID-19 cases – (figure not subject to release due to small case numbers and impact on patient privacy)
**numbers correct as of 26/10/2020*

Deterioration across all
outbreak hospitals
except:
Ysbyty Cwm Rhondda
(stable/improving)
Maesteg (stable)

Key points

- Contact Tracing
- Impact of increasing cases on ability to undertake timely contact tracing
 - Community – additional contact tracing staff recruited
 - Hospital staff
 - Divert contact tracing capacity and early staff intervention
 - Intelligence and systems review
 - Behavioural science approach to support compliance
- Testing
 - location of Mobile testing Units informed by intelligence
- Risk Communication and Community Engagement & Protect Tactical Group
 - social media push back
 - Self-isolation Support and Advice-line
- Vaccination
 - January 2021
- Future measures post fire-break