



Llywodraeth Cymru
Welsh Government

Health and Social Care Climate Emergency National Programme



First Minister Mark Drakeford:

“The environment will be at the heart of our decision-making. The climate change emergency has not gone away while we have been dealing with the pandemic.

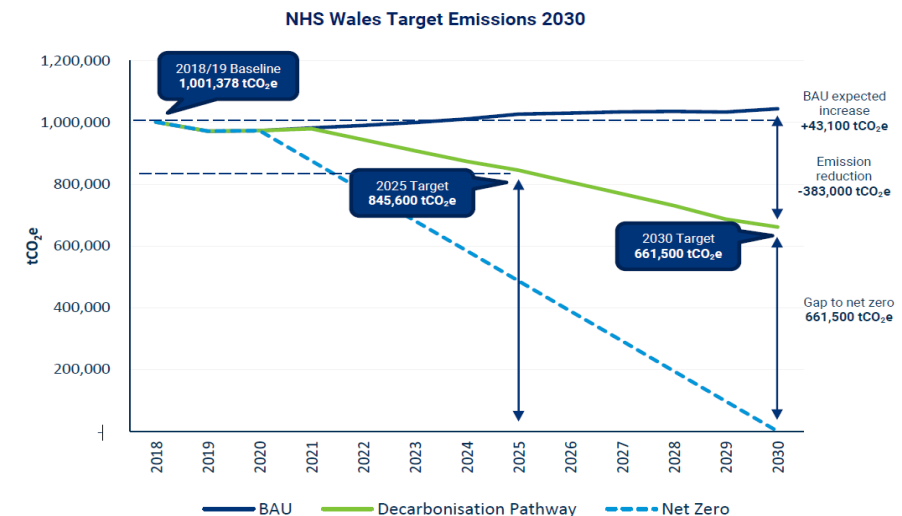
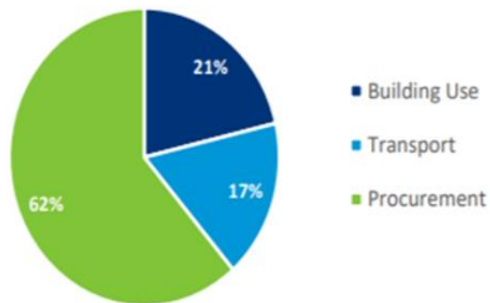
“Wales is a beautiful country with immense natural assets, which will help power our recovery and create the jobs of the future.

“In my new government, the environment doesn’t just have a seat at the Cabinet table, it will be a consideration in all we do.”

Targets and milestones

- Wales now has legally binding targets to deliver the goal of net-zero emissions by 2050.
- This is alongside an **ambition for the public sector in Wales to collectively be net zero carbon by 2030.**
- **The emissions emitted by Health are the largest of the public sector** – the NHS Wales Carbon Footprint 2018/19 was estimated to be **1,001,378 tCO₂e**.
- As an absolute minimum, we need to deliver a **reduction in emissions of 16% by 2025 and 34% by 2030.** **NB:** From 16/17 to 18/19 a small reduction of 4.8% was achieved. **NHS Decarbonisation Strategic Delivery Plan is a clear mandate for action but only the start...**
- We also need **evidence-based adaptation plans for health and social care** to counter the health and well-being implications of climate changes that are already 'locked-in'.

NHS Wales Carbon Footprint by Category 2018/19
(1,001,378 tCO₂e)



National Programme

Programme Vision

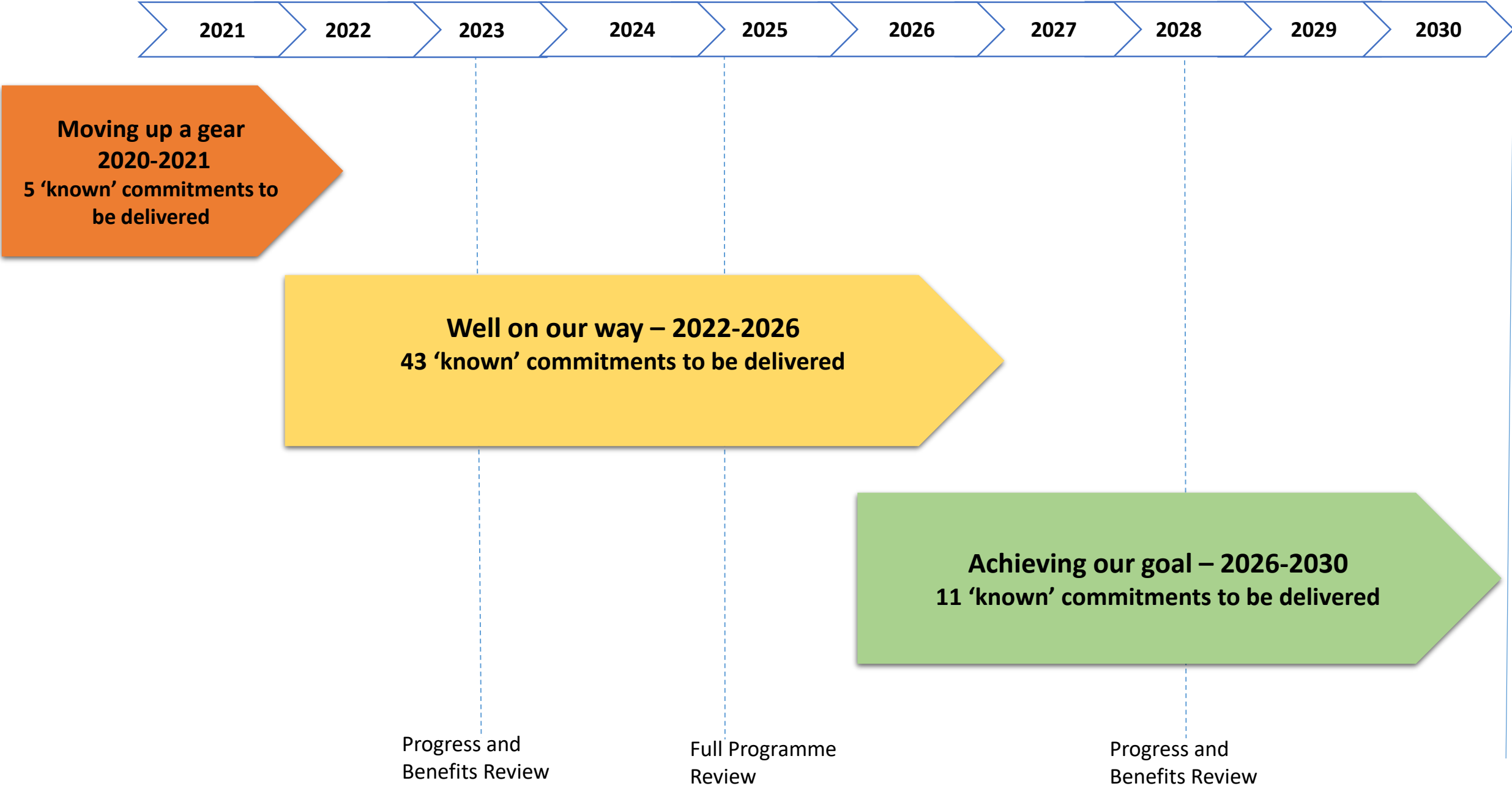
NHS Wales and the Social Care Sector fully support the Climate Emergency for Wales and deliver ambitious, sustainable decarbonisation and adaptation activity that result in:

- **Reduction of over 34% by 2030** to meet the ambition for the public sector to be collectively net zero by 2030.
- **A resilient health and social care system adapted to climate change.**

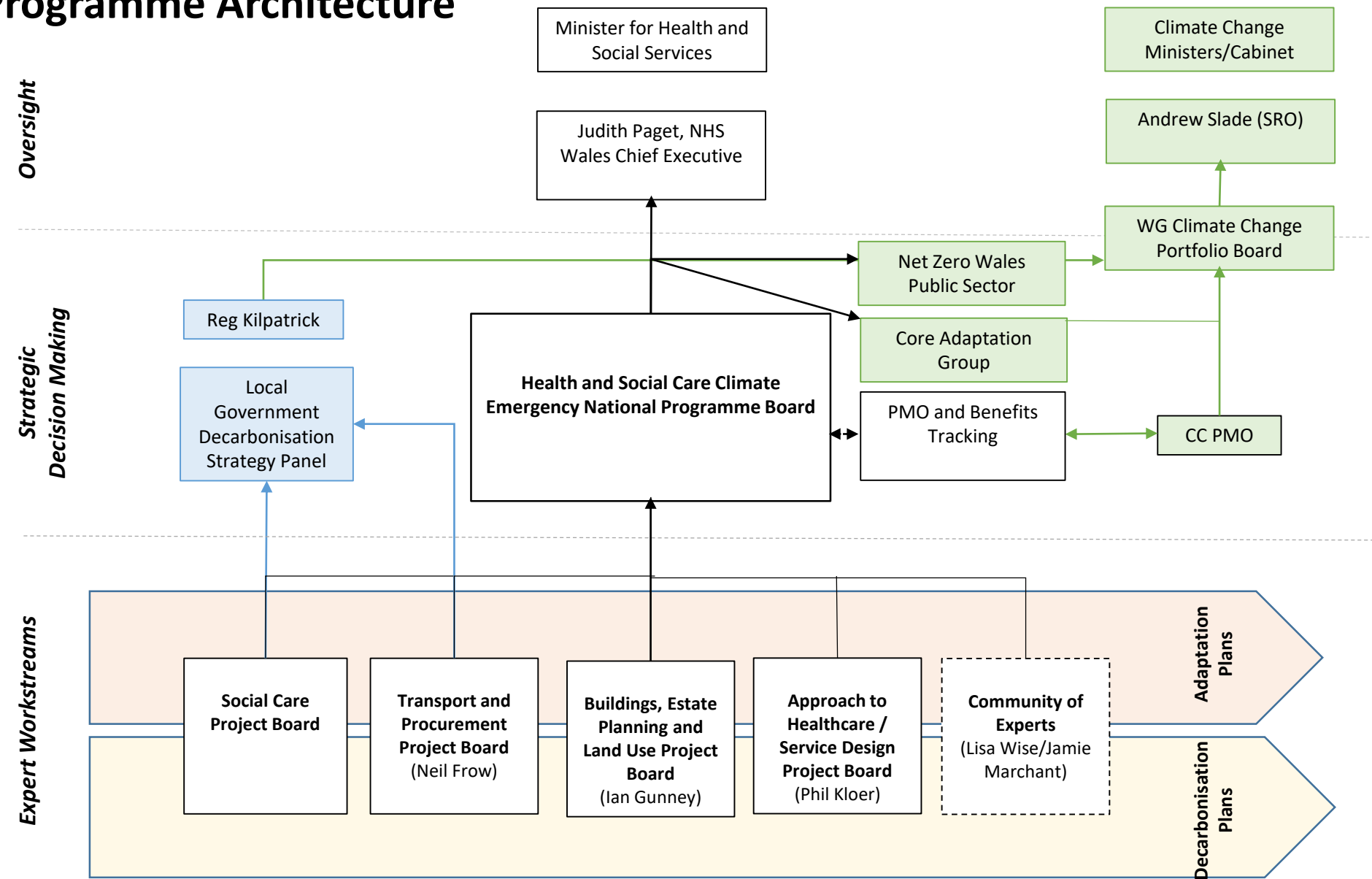
Programme Benefits (Work in progress!)

- Improved public health, reduced costs
- Greater resilience - zero disruption to the delivery of health and social care from climate change.

National Programme - Route Map



National Programme Architecture



What this means for NHS Organisations

- Establishment of the National Programme = clear mandate for action = National initiatives that need organisational and more localised action + Local actions that should be scaled-up and rolled out across organisations and Nationally.
- *‘Action Plans’ will be developed (by HBs, Trusts, special body and NWSSP) which will form the basis of how organisations will implement Delivery Plan initiatives - these will be developed two-yearly and committed to within Integrated Medium-Term Plans’*
 - Decarbonisation Actions Plans to be submitted as part of the IMTP process by March 31st 2022.
 - Need to build collective ‘Climate Change’ mindset and behaviours – embedded in all that we do.
- We will need Health Boards to track and report on progress against plans – collective performance is key.
- We want to share ‘what works’ and build in assurance and challenge through developing a community of experts across NHS organisations.
- And in return:
 - Advice and support on the Programme and plans
 - Toolkits to support – *‘What works’*, *Public Sector Roadmap* and *Reporting Guide*
 - Comms and engagement – evidence-based narratives to support behaviour change
 - Programme Board as a mechanism to unblock